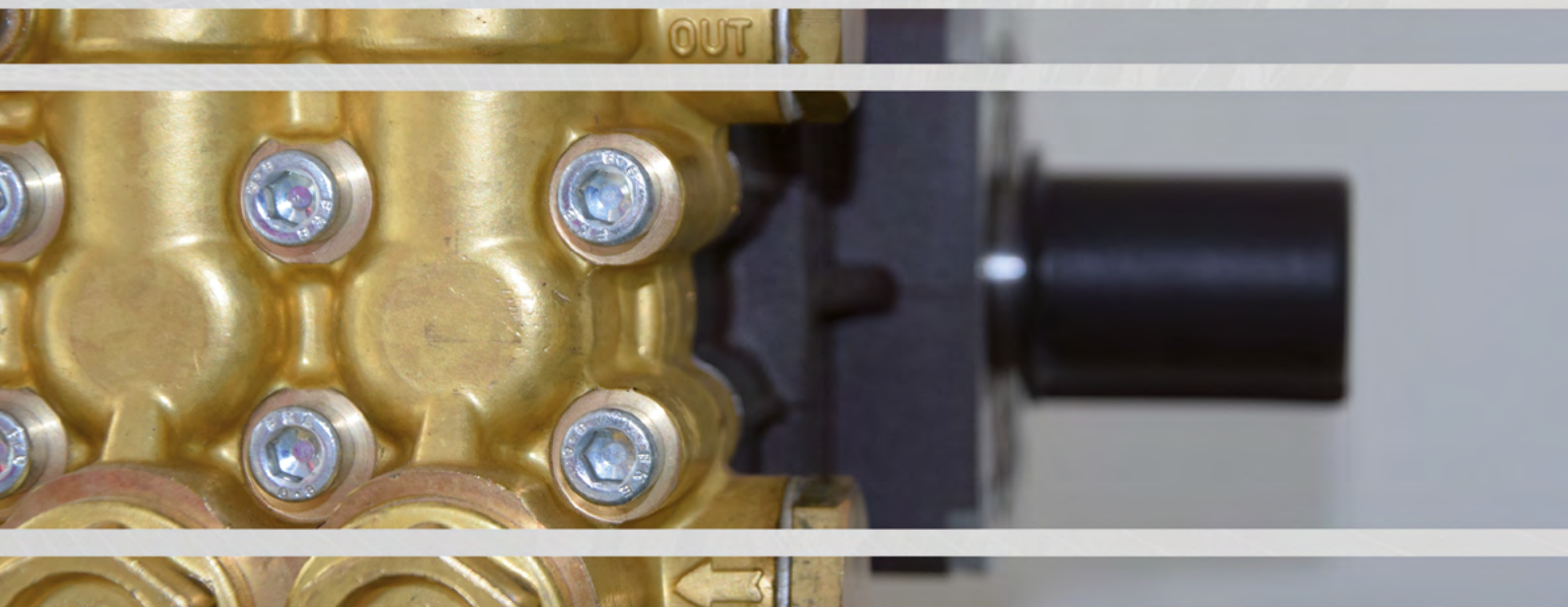


# Części zamienne *Spare parts*



*We know today,  
what do you need tomorrow!*




**POMPKA PALIWA  
FUEL PUMP**

6 - 14 bar

Nr katalogowy Code	Elektrozawór Electro valve	Obroty Gear	Typ Type
0400506060	24 V	lewe / left ↺	"K"
0400506061	24 V	prawe / right ↻	


**POMPKA PALIWA  
FUEL PUMP**

6 - 14 bar

Nr katalogowy Code	Elektrozawór Electro valve	Obroty Gear	Typ Type
0400506090	brak / without	lewe / left ↺	"K"
0400506091	brak / without	prawe / right ↻	


**POMPKA PALIWA  
FUEL PUMP**

Nr katalogowy Code	Typ Type	Obroty Gear
0400506101	Suntec 220V	lewe / left ↺


**ELEKTROZAWÓR DO POMPKI PALIWA  
ELECTROVALVE FOR FUEL PUMP**

Nr katalogowy Code	Napięcie Voltage
0411599091	24 V
0411599092	230 V


**CEWKA ELEKTROMAG. DO POMPKI PALIWA  
FUEL PUMP COIL**

Nr katalogowy Code	Napięcie Voltage
0411599093	24 V
0411599094	230 V


**FILTR METALOWY POMPKI PALIWA  
FUEL METAL FILTER**

Nr katalogowy Code	Typ Type
0411599090	"K"

**ELEKTRODY BLOCK  
ELECTRODE**

Nr katalogowy Code	Typ Type
-----------------------	-------------

0400502011	"K"
0400106011	"P3"


**ELEKTRODY  
ELECTRODE**

Nr katalogowy Code	Typ Type
-----------------------	-------------

0400506010	"K" stary typ / old type
0400106010	"P1"


**PRZEWODY ZAPŁONOWE  
PLUG-IN TWIN CAP ASSY**

Nr katalogowy Code	Typ Type
-----------------------	-------------

0400506108	"K"
------------	-----


**PRZEWODY WYSOKIEGO NAPIĘCIA  
HT IGNITION CABLE**

1 mb  
1 lm

Nr katalogowy Code	Typ Type
-----------------------	-------------

0400106108	"K"
------------	-----


**TRANSFORMATOR  
TRANSFORMER**

Nr katalogowy Code	Napięcie wejścia Entry voltage	Napięcie wyjścia Exit voltage	Typ Type
-----------------------	-----------------------------------	----------------------------------	-------------

0400206107	230 V	2 x 5000 V	wtyk / connector
0400206106	380 V	2 x 5000 V	


**TRANSFORMATOR  
TRANSFORMER**

Nr katalogowy Code	Napięcie wejścia Entry voltage	Napięcie wyjścia Exit voltage	Typ Type
-----------------------	-----------------------------------	----------------------------------	-------------

0400106105	230 V	2 x 4000 V	"P"
0400106104	400 V	2 x 4000 V	


**TRANSFORMATOR  
TRANSFORMER**

Nr katalogowy Code	Napięcie wejścia Entry voltage	Napięcie wyjścia Exit voltage	Typ Type
-----------------------	-----------------------------------	----------------------------------	-------------

0400106100	230 V	2 x 4000 V	wkręcany / screw
0400106101	380 V	2 x 4000 V	wkręcany / screw





### DYSZA PALIWA FUEL NOZZLES

Nr katalogowy Code	Rozmiar Size	Kąt Angle
0702201185	1,35	45°
0702201181	1,50	45°
0400102000	0,50	60°
0400102001	0,60	60°
0400102002	0,75	60°
0400102003	0,85	60°
0400102004	1,00	60°
0400102005	1,10	60°
0400102012	1,25	60°
0400102006	1,35	60°
0400102007	1,50	60°
0400102008	1,65	60°
0400102009	1,75	60°
0400102010	2,00	60°
0400102011	2,25	60°



### MANOMETRY GAUGES

Nr katalogowy Code	Wejście Inlet	Średnica (mm) Bore (mm)	Ciśnienie (bar) Pressure (bar)	Typ Type
0202407004	1/8" M	40	300	tył / back
0202407002	1/8" M	40	160	tył / back
0200107030	1/4" M	50	160	tył / back
0202407019	1/4" M	50	250	tył / back
0200107032	1/4" M	50	250	bok / side
0202407020	1/4" M	50	315	tył / back
0200107033	1/4" M	50	315	bok / side
0200107034	1/4" M	50	400	bok / side
0200107035	1/4" M	63	160	bok / side
0200107065	1/4" M	63	250	tył / back
0202107022	1/4" M	63	250	bok / side
0200107021	1/4" M	63	315	tył / back
0200107020	1/4" M	63	315	bok / side
0202407043	1/4" M	63	400	bok / side



### WĘŻYK MANOMETRA GAUGES HOSE

Nr katalogowy Code	Długość (mm) Length (mm)	Typ Type
0200107093	390	2 x 1/8"
0200107094	500	2 x 1/8"



### REDUKCJA DO MANOMETRU GAUGES NIPPLE

Nr katalogowy Code	Typ Type
0703402215	1/4" - M12
0703402214	1/8" - M12

### ZŁĄCZE OBROTOWE 360° SWIVEL CONNECTION 360°

45 l/min - 280 bar - 160 °C

Nr katalogowy Code	Wejście Inlet	Wyjście Outlet	Komplet naprawczy Spare parts kit
1103402950	1/4" F	1/4" M	0803402013
1103402951	1/4" F	3/8" M	-
1103402952	3/8" F	3/8" M	0803402013
1103402948	3/8" F	1/4" M	-



### ZŁĄCZE OBROTOWE 90° SWIVEL CONNECTION 90°

45 l/min - 280 bar - 160 °C

Nr katalogowy Code	Wejście Inlet	Wyjście Outlet	Komplet naprawczy Spare parts kit
1103402954	1/4" M	1/4" F	0803402012
1103402955	3/8" M	3/8" F	0803402012
1103402946	3/8" M	1/4" F	-
1103402945	1/4" M	3/8" F	-



### WYŁĄCZNIK CONDOR SWITCH CONDOR

Nr katalogowy Code	Natężenie prądu Current intensity
0300506001	10 - 16 A



### WYŁĄCZNIK PRZEPLYWU MV 60 - poziomy FLOW SWITCH MV 60 - horizontal

Nr katalogowy Code	Typ Type
0203407000	3/8" F - 3/8" F



### WYŁĄCZNIK PRZEPLYWU REED FLOW SWITCH REED

Nr katalogowy Code
0200507000



### WYŁĄCZNIK CIŚNIENIOWY PRESSURE SWITCH

250 bar - 75 °C

Nr katalogowy Code	Ciśnienie aktywacyjne (bar) Activation pressure (bar)	Wejście Inlet
0411599098	15	1/8" M
0411599099	45	1/8" M
0411599100	25	1/8" M





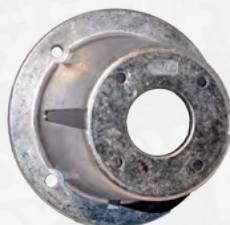
**PLYWAK MOSIĄDZ Z FILTREM  
BRASS TAPS WITH FILTER**

Nr katalogowy Code	Wejście Inlet	Ciśnienie Pressure	Temperatura Temperature
0702102200	3/8" M	7 bar	60 °C



**SPRZĘGŁO  
FLEXIBLE COUPLING**

Nr katalogowy Code	Pasuje do Fits to
0226407007	CAT 340/350 (20-28)
0226407015	CAT 3CP DN28 (16,5-28)
0226407022	CAT 5CP DN38-20 (38-20)
0225507014	Interpump ZG151 - WS151 (24-28)
0225507016	Interpump ZG091 - W91, W98, WW141(24-28)
0225507015	Interpump ZG202 - WS201, WS202 (24-38)
0225507107	Interpump ZG044 - W140 (24-28)
0225507024	Interpump ZG066 (24-42)
0225507133	Interpump ZG070 - FE5102 (24-24)
0225507108	Interpump ZGWW75 - FE5101 (24-24)
0277907005	HAWK H90 (D-ST) (24-18)
0277907047	HAWK H100/112 (28-18)
0277907010	HAWK H100/112 NMT-NPM-NLTI (28-24)
0277907011	HAWK H132 (24-38)



**OSŁONA SPRZĘGŁA  
FLANGE**

Nr katalogowy Code	Pasuje do Fits to
0226407006	CAT 340/350
0226407016	CAT 5CP
0226407021	CAT 3CP
0225507106	Interpump FE5101
0225507105	Interpump W140
0225599122	Interpump WS201
0277907012	HAWK H132
0277907007	HAWK H100/112 (MTI-LTI-PM)
0277907009	HAWK H100/112 (D-ST)
0277907004	HAWK H90 (D-ST)

**WĘŻOWNICA "K"**  
**COIL "K"**

Nr katalogowy  
Code

0500599102

Typ  
Type

500 CI, 501 C, 550 C, 555 C, 555 CI,  
557 CI, 590 C, 600 C, 600 CI, 600 CS,  
690 CI, 698 C, 698 CSX, 700 C, 790 C,  
790 CI, 790 CS, 797 CI



**WĘŻOWNICA "K" - inox**  
**COIL "K" - s. steel**

Nr katalogowy  
Code

0500199111

Typ  
Type

500 CI, 501 C, 550 C, 555 C, 555 CI,  
557 CI, 590 C, 600 C, 600 CI, 600 CS,  
690 CI, 698 C, 698 CSX, 700 C, 790 C,  
790 CI, 790 CS, 797 CI



**WĘŻOWNICA "K"**  
**COIL "K"**

Nr katalogowy  
Code

0500599101

Typ  
Type

580, 610, 650, 690, 750, 800 B,  
800 BE, 810, 890, 900, 900 B, 990,  
1000 BE, 1000 DE, 1200 DE



**WĘŻOWNICA "K" - inox**  
**COIL "K" - s. steel**

Nr katalogowy  
Code

0500199112

Typ  
Type

580, 610, 650, 690, 750, 800 B,  
800 BE, 810, 890, 900, 900 B, 990,  
1000 BE, 1000 DE, 1200 DE



**WĘŻOWNICA "K"**  
**COIL "K"**

Nr katalogowy  
Code

0500599103

Typ  
Type

655, 695, 695 S, 695 SX, 699, 745,  
755, 795, 891 ST, 895 S, 895 SX, 945,  
995, 1291 ST, SB-HDS 695, SUPER



**WĘŻOWNICA "K" - inox**  
**COIL "K" - s. steel**

Nr katalogowy  
Code

0500199110

Typ  
Type

655, 695, 695 S, 695 SX, 699, 745,  
755, 795, 891 ST, 895 S, 895 SX, 945,  
995, 1291 ST, SB-HDS 695, SUPER



**WĘŻOWNICA "K"**  
**COIL "K"**

Nr katalogowy  
Code

0501199109

Typ  
Type

HDS 685, 895, 995M ECO



**WĘŻOWNICA "K"**  
**COIL "K"**

Nr katalogowy  
Code

0500599100

Typ  
Type

1210, 1250, 1290, 1390



**WĘŻOWNICA "K"**  
**COIL "K"**

Nr katalogowy  
Code

0500599107

Typ  
Type

10/20, 8/17, 9/17



**WĘŻOWNICA "K"**  
**COIL "K"**

Nr katalogowy  
Code

0500599105

Typ  
Type

855HS



**WĘŻOWNICA IPC SILVER**  
**COIL IPC SILVER**

Nr katalogowy  
Code

0500199114

Typ  
Type

12/160



**WĘŻOWNICA "W"**  
**COIL "W"**

Nr katalogowy  
Code

0500199109

Typ  
Type

C, CSI, DX (-1998 r.)



**WĘŻOWNICA "KR"**  
**COIL "KR"**

Nr katalogowy  
Code

0500599106

Typ  
Type

650, 750, 755, 870, 890, 895, 1160, 1165



**WĘŻOWNICA "L"**  
**COIL "L"**

Nr katalogowy  
Code

0500199108

Typ  
Type

LKX, NPX, LKX4, NPX4, TEKNA



**WĘŻOWNICA "P"**  
**COIL "P"**

Nr katalogowy  
Code

0500199100

Typ  
Type

Futura, Mistral, Golden, FIRE BOX



**WĘŻOWNICA "P"**  
**COIL "P"**

Nr katalogowy  
Code

0500199113

Typ  
Type

24 MT



**WĘŻOWNICA "F"**  
**COIL "F"**

Nr katalogowy  
Code

0500199104

Typ  
Type

Professional TK15, TK 215



**WĘŻOWNICA "F"**  
**COIL "F"**

Nr katalogowy  
Code

0500199107

Typ  
Type

Indy, Super Indy





### CZĘŚCI DO LANCY PIANY LS 12 SPARE PARTS FOR FOAM LANCE LS 12

Nr katalogowy Code	Nazwa Name
0702199513	A - zbiornik 2l / tank 2l
0702199511	B - podkładka pod sitko / washer for stainer
0702199512	C - sitko / stainer
0802101011	D - dysza / nozzle



### LANCA PIANY PROFI 2 FOAM LANCE PROFI 2

17 l/min - 200 bar - 60 °C

Nr katalogowy Code	Wejście Inlet	Dysza Nozzle	Zbiornik (litr) Tank (litre)	Typ Type
0725505601	M22 M	1,40	0,5	Kr
0725505594	M22 F	1,40	0,5	K
0725505599	M22 M	1,45	0,5	Kr
0725505595	M22 F	1,45	0,5	K
0725505500	oryg.	1,60	0,5	oryg.
0725505593	M22 F	1,60	0,5	K
0725505600	bayonet	1,60	0,5	K
0725505597	M22 M	1,70	0,5	Kr
0725505596	M22 F	1,70	0,5	K
0725505590	M22 M	1,60	0,5	Kr



### ZBIORNIK CHEMII TANK

Nr katalogowy Code	Pojemność (l) Capacity (l)
0725599514	0,5



### KORPUS REGULACJI CHEMII INTERPUMP CHEMISTRY REGULATION CORPS INTERPUMP

Nr katalogowy  
Code

0725599516



### POKRĘTŁO REGULACJI CHEMII INTERPUMP CHEMISTRY KNOB INTERPUMP

Nr katalogowy  
Code

0725501001





**SITKO LANCY PIANY INTERPUMP  
STAINER FOR FOAMER INTERPUMP**

Nr katalogowy  
Code

0725599510



**TRZPIEŃ MOCUJĄCY REGULACJI DYSZY INTERPUMP  
ARBOR NOZZLE CONTROL INTERPUMP**

Nr katalogowy  
Code

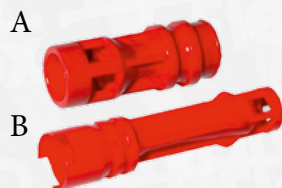
0725599512



**GŁOWICA DYSZY INTERPUMP  
NOZZLE HEAD INTERPUMP**

Nr katalogowy  
Code

0725501000



**RURKA VENTURIEGO  
VENTURI TUBE**

Nr katalogowy Code	Typ Type
0725501003	A
0725501002	B

0725501003

A

0725501002

B



**DYSZA DO LANCY PIANY INTERPUMP  
NOZZLE FOR INTERPUMP FOAMER**

Nr katalogowy Code	Dysza (mm) Nozzle (mm)
0725505901	1,40
0725505902	1,45
0725505900	1,60
0725505903	1,70

0725505901

1,40

0725505902

1,45

0725505900

1,60

0725505903

1,70



**MOCOWANIE BLASZKI INTERPUMP  
PLATE FITTING INTERPUMP**

Nr katalogowy  
Code

0225501012



**BLASZKA REGULACJI CHEMII INTERPUMP  
PLATE INTERPUMP**

Nr katalogowy  
Code

0225501010

**LANCA PIANY LS 3**  
**FOAM LANCE LS 3**

12 l/min - 160 bar - 60 °C

Nr katalogowy Code	Wejście Inlet	Dysza Nozzle	Zbiornik (litr) Tank (litre)
0702105500	1/4" F	1,25	1
0702105596	1/4" F	1,40	1
0702105595	M18 F	1,25	1
0702105594	M18 F	1,40	1
0702105597	M22 F	1,25	1
0702105599	M22 F	1,40	1
0702105591	M22 M	1,25	1
0702105590	M22 M	1,40	1
0702105600	bayonet	1,25	1



**DYSZA DO LANCY PIANY LS3**  
**NOZZLE FOR LS3 FOAMER**

Nr katalogowy Code	Dysza (mm) Nozzle (mm)
0702105903	1.25
0702105900	1.40



**POKRĘTŁO REGULACJI CHEMII LS3**  
**CHEMISTRY CONTROL KNOB LS3**

Nr katalogowy  
Code  
0702199515



**GŁOWICA LANCY LS3**  
**LANCE HEAD LS3**

Nr katalogowy  
Code  
0725501004



**BOLEC GŁOWICY LS3**  
**PIN HEAD LS3**

Nr katalogowy  
Code  
0725501005



**MOCOWANIE TŁOKA**  
**PISTON FITTING**

Nr katalogowy  
Code  
0702105003





**INJEKTOR CHEMII LS3**  
**CHEMICAL INJECTOR LS3**

Nr katalogowy  
Code

0703402899



**MOCOWANIE BLASZKI LS3**  
**PLATE FITTING LS3**

Nr katalogowy  
Code

0702199529



**BLASZKA LS3**  
**PLATE LS3**

Nr katalogowy  
Code

0702199530



**SITKO LANCY PIANY LS3**  
**STAINER FOR FOAMER LS3**

Nr katalogowy  
Code

0702199509



**MOCOWANIE ZBIORNIKA CHEMII LS3**  
**CHEMICAL TANK FITTING LS3**

Nr katalogowy  
Code

0702105010



**ZBIORNIK CHEMII LS3**  
**TANK LS3**

Nr katalogowy  
Code

0702199514

Pojemność (l)  
Capacity (l)

1

### ZBIORNIK NATRYSKU CHEMII NEBULIZERS

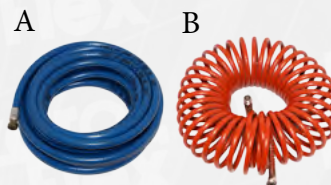
Nr katalogowy Code	Pojemność Capacity	Typ Type	Materiał Material
1102402904	24 l	A	stal powlekana / painted steel
1102402901	24 l	A	inox / stainless steel
1102402903	24 l	B	stal powlekana / painted steel
1102402905	24 l	B	inox / stainless steel

A - opryskiwacz / sprayer  
B - pianownica / foamer



### WAŻ DO ZBIORNIKA NATRYSKU CHEMII NEBULIZER AND FOAMER HOSE

Nr katalogowy Code	Długość Length	Typ Type
0602403035	10 m	A - pianownica / foamer
0602403046	10 m	B - opryskiwacz / sprayer



### CZĘŚCI DO ZBIORNIKA NATRYSKU CHEMII SPARE PARTS FOR NEBULIZER AND FOAMER

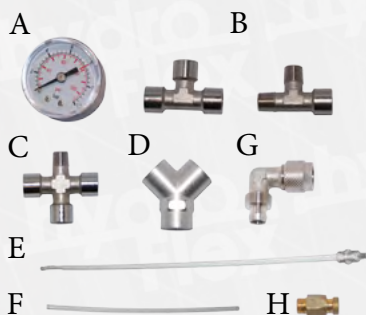
Nr katalogowy Code	Nazwa Name
1102402910	A - dysza plastikowa / plastic nozzle
1102402941	B - dysza metalowa / metal nozzle
1102402935	C - podstawa + dysza INOX / base protector + nozzle S. STEEL
1102402936	D - podstawa + dysza / base protector + nozzle
1102402907	E - podstawa mocowania wraz z czterema dyszami / base protector with four nozzles



### CZĘŚCI DO ZBIORNIKA NATRYSKU CHEMII SPARE PARTS FOR NEBULIZER AND FOAMER

Nr katalogowy Code	Nazwa Name
1102402909	A - zawór ciśnieniowy / pressure valve
1102402923	B - zawór regulacji ciśnienia pianownicy / pressure valve
0800105613	C - zawór bezpieczeństwa 1/8" / security valve 1/8"
1102402930	D - zawór ciśnieniowy 1/8" - 1/8" / pressure valve 1/8" - 1/8"
0800105614	E - zawór ciśnieniowy 1/4" - 1/8" / pressure valve 1/4" - 1/8"
1102402921	F - wlot powietrza / air inlet
0800199611	G - nakrętka zbiornika chemii: lanca - wąż nut for foamer: lance - hose
0800199612	H - redukcja do pistoletu natrysku chemii 1/4M - 1/4M nipple for foamer gun 1/4M - 1/4M
1102402931	I - redukcja do pistoletu natrysku chemii 1/2M - 1/4F nipple for foamer gun 1/2M - 1/4F
1102402938	J - redukcja do zbiornika / nipple for foamer





### CZĘŚCI DO ZBIORNIKA NATRYSKU CHEMII SPARE PARTS FOR NEBULIZER AND FOAMER

Nr katalogowy Code	Nazwa Name
1102402908	A - manometr 1/8" M; 12 bar / gauge 1/8" M; 12 bar
1102402919	B - trójnik / connector
1102402934	C - trójnik / connector
1102402937	D - trójnik / connector
1102402927	E - rurka poboru chemii z filtrem / chemistry collection tube with filter
1102402926	F - rurka kontroli płynu / tube fluid control
1102402924	G - kolanko kontroli ilości płynu / elbow fluid control
1102402932	H - odpowietrznik zbiornika / tank vent



### CZĘŚCI DO ZBIORNIKA NATRYSKU CHEMII SPARE PARTS FOR NEBULIZER AND FOAMER

Nr katalogowy Code	Nazwa Name
1102402906	A - korek plastikowy / plastic cork
1102402920	B - wlew do zbiornika / plastic funnel
1102402933	C - redukcja do wlewu zbiornika / plastic funnel nipple



### CZĘŚCI DO ZBIORNIKA NATRYSKU CHEMII SPARE PARTS FOR NEBULIZER AND FOAMER

Nr katalogowy Code	Nazwa Name
1102403000	A - kółko / wheel (24l)
1102403001	B - kółko / wheel (50l)
1102402922	C - mocowanie koła (24l) / wheel holder (24l)
1102403002	D - mocowanie koła (50l) / wheel holder (50l)



### CZĘŚCI DO TURBIN SPARE PARTS FOR VACUUM CLEANER MOTOR

Nr katalogowy Code	Opis Description
1300506302	kabel / cable 400 mm
1300506303	szczotka grafitowa / carbon brush



### POMPKA WODY WATER PUMP

Nr katalogowy Code	Napięcie (V) Voltage (V)	Moc (W) Power (W)
0400506100	230	40

**TURBINA VACUUM MOTOR**

Nr katalogowy Code

1300506300

Moc (W / V)  
Power (W / V)

Turbiny  
Turbine

1100 / 230

1



**TURBINA VACUUM MOTOR**

Nr katalogowy Code

1300506311

Moc (W / V)  
Power (W / V)

Turbiny  
Turbine

800 / 230

2



**TURBINA VACUUM MOTOR**

Nr katalogowy Code

1300506306

Moc (W / V)  
Power (W / V)

Turbiny  
Turbine

1100 / 230

2



**TURBINA VACUUM MOTOR**

Nr katalogowy Code

1300506312

Moc (W / V)  
Power (W / V)

Turbiny  
Turbine

1150 / 230

2



**TURBINA VACUUM MOTOR**

Nr katalogowy Code

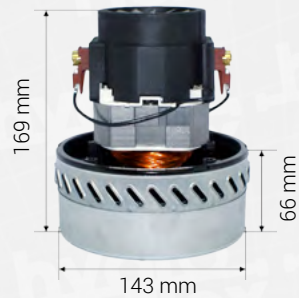
1300506301

Moc (W / V)  
Power (W / V)

Turbiny  
Turbine

1200 / 230

2



**TURBINA VACUUM MOTOR**

Nr katalogowy Code

1300506313

Moc (W / V)  
Power (W / V)

Turbiny  
Turbine

1200 / 230

2



**TURBINA VACUUM MOTOR**

Nr katalogowy Code

1300506308

Moc (W / V)  
Power (W / V)

Turbiny  
Turbine

430 / 24

2



**TURBINA VACUUM MOTOR**

Nr katalogowy Code

1300506307

Moc (W / V)  
Power (W / V)

Turbiny  
Turbine

430 / 24

2



**TURBINA VACUUM MOTOR**

Nr katalogowy Code

1300506309

Moc (W / V)  
Power (W / V)

Turbiny  
Turbine

500 / 24

2



**TURBINA VACUUM MOTOR**

Nr katalogowy Code

1300506310

Moc (W / V)  
Power (W / V)

Turbiny  
Turbine

740 / 36

3



**TURBINA DOMEL  
VACUUM MOTOR**
**Nr katalogowy  
Code**

1300506321

**Moc (W / V)  
Power (W / V)**

1200 / 230

**Turbiny  
Turbine**

2


**TURBINA DOMEL  
VACUUM MOTOR**
**Nr katalogowy  
Code**

1300506323

**Moc (W / V)  
Power (W / V)**

2100 / 230

**Turbiny  
Turbine**

2


**TURBINA  
VACUUM MOTOR**
**Nr katalogowy  
Code**

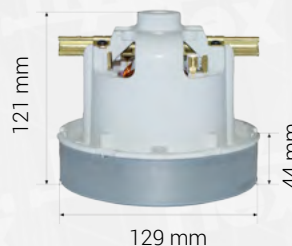
1300506304

**Moc (W / V)  
Power (W / V)**

1050 / 230

**Turbiny  
Turbine**

1


**TURBINA  
VACUUM MOTOR**
**Nr katalogowy  
Code**

1300506315

**Moc (W / V)  
Power (W / V)**

1100 / 230

**Turbiny  
Turbine**

2


**TURBINA  
VACUUM MOTOR**
**Nr katalogowy  
Code**

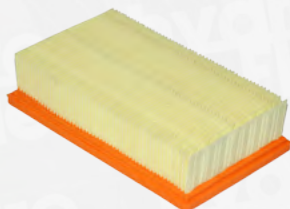
1300506305

**Moc (W / V)  
Power (W / V)**

1200 / 230

**Turbiny  
Turbine**

2

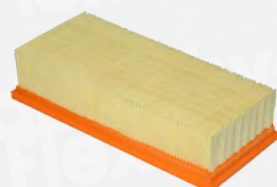

**FILTR PAPIEROWY ZAMIENNIK "K" 6.904-367  
PAPER FILTER REPLACEMENT "K" 6.904-367**

240x140x55 mm

**Nr katalogowy  
Code**

0139701104

**Pasuje do  
Fits**

 NT35/1 Eco/Te/M; NT 45/1 Eco/Te/M; NT 55/1 Eco/Te/M;  
NT361 Eco/Te/M; NT561 Eco/Te/M; NT611 Eco/ Te/M;  
NT25/1 Ap; NT35/1 Ap; NT611KF; NT45/1 Tact; NT45/1 Tact Te

**FILTR PAPIEROWY ZAMIENNIK "K" 6.904-283  
PAPER FILTER REPLACEMENT "K" 6.904-283**

300x140x70 mm

**Nr katalogowy  
Code**

0139701107

**Pasuje do  
Fits**

NT 65/2 Eco, NT 65/2 Eco Tc, NT 72/2 Eco Tc, NT 802



**FILTR PAPIEROWY ZAMIENNIK "K" 6.414-498**  
**PAPER FILTER REPLACEMENT "K" 6.414-498**

200x75x70 mm

Nr katalogowy  
Code

Pasuje do  
Fits

0139701106

2501, 2501 TE, 2601, 2601 Plus, 3001, SE3001, 3001 Hot, SE2001, 2701, A2701, 2701 TE, A2701 TE, A2731 Pt, 2801, A2801, 2801 Plus, A2801 Plus



**FILTR PAPIEROWY ZAMIENNIK "K" 6.414-552**  
**PAPER FILTER REPLACEMENT "K" 6.414-552**

Ø122x115 mm

Nr katalogowy  
Code

Pasuje do  
Fits

0139701105

1000, A100, A1001, 2101, A2101, 2101TE, A2131pt, 2111, A2111, 2301, 2105, 4000 plus, 4000TE, 2201F, A2201, A2231pt, A2251Me, 2901F, A2901, A2004, A2054Me, A2024pt, A2204, A2234pt, A2254, A2534pt, 2654Me, K2105



**ZAWÓR BY PASS VRT3 Z ELEKTROZAWOREM**  
**SECURITY VALVE BY PASS VRT3 WITH SWITCH**

Nr katalogowy  
Code

Wejście  
Inlet

Ciśnienie (bar)  
Pressure (bar)

Przepływ (l/min)  
Flow (l/min)

Temperatura (°C)  
Temperature (°C)

0722559013

3/8" F

250

30

90

0803402016

komplet naprawczy / spare parts kit



**ZAWÓR BY PASS VRT3 Z WEJŚCIEM NA MANOMETR**  
**SECURITY VALVE BY PASS VRT3 WITH ENTRANCE FOR GAUGE**

Nr katalogowy  
Code

Wejście  
Inlet

Ciśnienie (bar)  
Pressure (bar)

Przepływ (l/min)  
Flow (l/min)

Temperatura (°C)  
Temperature (°C)

0703405901

3/8" F

250

30

90

0803402017

komplet naprawczy / spare parts kit



**ZAWÓR BY PASS VRT3 Z ELEKTROZAWOREM I WEJŚCIEM NA MANOMETR**  
**SECURITY VALVE BY PASS VRT3 WITH SWITCH AND ENTRANCE FOR GAUGE**

Nr katalogowy  
Code

Wejście  
Inlet

Ciśnienie (bar)  
Pressure (bar)

Przepływ (l/min)  
Flow (l/min)

Temperatura (°C)  
Temperature (°C)

0703405902

3/8" F

250

30

90

0803402016

komplet naprawczy / spare parts kit



**ZAWÓR BY PASS PULSAR 4 Z ELEKTROZAWOREM**  
**SECURITY VALVE BY PASS PULSAR4 WITH SWITCH**

Nr katalogowy  
Code

Wejście  
Inlet

Ciśnienie (bar)  
Pressure (bar)

Przepływ (l/min)  
Flow (l/min)

Temperatura (°C)  
Temperature (°C)

0702105902

3/8" F

310

40

90

0802499907

komplet naprawczy / spare parts kit





**ZAWÓR BY PASS PULSAR4 Z WEJŚCIEM NA MANOMETR  
SECURITY VALVE BY PASS PULSAR4 WITH ENTRANCE FOR GAUGE**

Nr katalogowy Code	Wejście Inlet	Ciśnienie (bar) Pressure (bar)	Przepływ (l/min) Flow (l/min)	Temperatura (°C) Temperature (°C)
0702105901	3/8" F	310	40	90
0802499908	komplet naprawczy / spare parts kit			



**ZAWÓR BY PASS VB56  
SECURITY VALVE BY PASS VB56**

Nr katalogowy Code	Wejście Inlet	Ciśnienie (bar) Pressure (bar)	Przepływ (l/min) Flow (l/min)	Temperatura (°C) Temperature (°C)
0702102108	3/8" M - 1/2" M	250	30	90
0703499915	komplet naprawczy / spare parts kit VB 56			
0802103017	komplet naprawczy / spare parts kit VB 55			
Pasuje do pompy / Fits to pump			Interpump SERIA 50-44-47-60-63	



**ZAWÓR BY PASS VB75  
SECURITY VALVE BY PASS VB75**

Nr katalogowy Code	Wejście Inlet	Ciśnienie (bar) Pressure (bar)	Przepływ (l/min) Flow (l/min)	Temperatura (°C) Temperature (°C)
0702102109	3/8" M - 1/2" M	250	30	90
0802103016	komplet naprawczy / spare parts kit			
Pasuje do pompy / Fits to pump			Interpump SERIA 50-44-47-60-63	



**ZAWÓR BY PASS VB80/400  
SECURITY VALVE BY PASS VB80/400**

Nr katalogowy Code	Wejście Inlet	Ciśnienie (bar) Pressure (bar)	Przepływ (l/min) Flow (l/min)	Temperatura (°C) Temperature (°C)
0722559008	1/2" F	450	80	90



**ZAWÓR BY PASS VB9  
SECURITY VALVE BY PASS VB9**

Nr katalogowy Code	Wejście Inlet	Ciśnienie (bar) Pressure (bar)	Przepływ (l/min) Flow (l/min)	Temperatura (°C) Temperature (°C)
0702102107	3/8" F	250	30	90
0802102015	komplet naprawczy / spare parts kit			



**ZAWÓR BY PASS VB9 Z ELEKTROZAWOREM  
SECURITY VALVE BY PASS VB9 WITH SWITCH**

Nr katalogowy Code	Wejście Inlet	Ciśnienie (bar) Pressure (bar)	Przepływ (l/min) Flow (l/min)	Temperatura (°C) Temperature (°C)
0702102104	3/8" F	250	30	90

**ZAWÓR BY PASS ST261**  
**SECURITY VALVE BY PASS ST261**

Nr katalogowy Code	Wejście Inlet	Ciśnienie (bar) Pressure (bar)	Przepływ (l/min) Flow (l/min)	Temperatura (°C) Temperature (°C)
0700505902	3/8" F	250	30	80
0800503015	komplet naprawczy / spare parts kit			



**ZAWÓR BY PASS ST261 Z ELEKTROZAWOREM**  
**SECURITY VALVE BY PASS ST261 WITH SWITCH**

Nr katalogowy Code	Wejście Inlet	Ciśnienie (bar) Pressure (bar)	Przepływ (l/min) Flow (l/min)	Temperatura (°C) Temperature (°C)
0700505903	3/8" F	250	30	80



**ZAWÓR BY PASS VRC25**  
**SECURITY VALVE BY PASS VRC25**

Nr katalogowy Code	Wejście Inlet	Ciśnienie (bar) Pressure (bar)	Przepływ (l/min) Flow (l/min)	Temperatura (°C) Temperature (°C)
0722559012	3/8" F	250	30	90
0803402014	komplet naprawczy / spare parts kit			



**ZAWÓR BY PASS VRC25 Z ELEKTROZAWOREM**  
**SECURITY VALVE BY PASS VRC25 WITH SWITCH**

Nr katalogowy Code	Wejście Inlet	Ciśnienie (bar) Pressure (bar)	Przepływ (l/min) Flow (l/min)	Temperatura (°C) Temperature (°C)
0722559014	3/8" F	250	30	90
0803402018	komplet naprawczy / spare parts kit			



**KIT ZAWORU BY BASS VRF2**  
**KIT FOR SECURITY VALVE BY PASS VRF2**

30 l/min - 310 bar - 90 °C

Nr katalogowy Code	Modele pomp Pump model
0703405914	INTERPUMP W91-W99; W154; SPECK NP16; UDOR
0703405916	INTERPUMP W151; COMET RW
0703405915	LEUCO SST; UDOR
0703405917	INTERPUMP W94; COMET LW-ZW
0703405913	ANNOVI XM-XT-XR-HPE; BERTOLINI TW-TML-TWE-WML; COMET FW



**ZAWÓR BY PASS VRF2**  
**SECURITY VALVE BY PASS VRF2**

Nr katalogowy Code	Wejście Inlet	Ciśnienie (bar) Pressure (bar)	Przepływ (l/min) Flow (l/min)	Temperatura (°C) Temperature (°C)
0703405919	3/8" F	250	30	90





**ZAWÓR BY PASS VRF2 INJEKTOR**  
**SECURITY VALVE BY PASS VRF2 INJEKTOR**

Nr katalogowy Code	Wejście Inlet	Ciśnienie (bar) Pressure (bar)	Przepływ (l/min) Flow (l/min)	Temperatura (°C) Temperature (°C)
0703405912	3/8" M - M22 M	250	30	90



**ZAWÓR BEZPIECZEŃSTWA ML610**  
**SECURITY VALVE ML610**

Nr katalogowy Code	Wejście Inlet	Ciśnienie (bar) Pressure (bar)	Temperatura (°C) Temperature (°C)
0722559011	3/8" M	10	56



**ZAWÓR BEZPIECZEŃSTWA SVL17**  
**SECURITY VALVE SVL17**

Nr katalogowy Code	Wejście Inlet	Ciśnienie (bar) Pressure (bar)	Przepływ (l/min) Flow (l/min)	Temperatura (°C) Temperature (°C)
0703405920	3/8" F	170	25	90



**ZAWÓR BEZPIECZEŃSTWA VS170**  
**SECURITY VALVE VS170**

Nr katalogowy Code	Wejście Inlet	Ciśnienie (bar) Pressure (bar)	Przepływ (l/min) Flow (l/min)	Temperatura (°C) Temperature (°C)
0702402107	3/8" F	170	24	90



**ZAWÓR BEZPIECZEŃSTWA VS240**  
**SECURITY VALVE VS240**

Nr katalogowy Code	Wejście Inlet	Ciśnienie (bar) Pressure (bar)	Przepływ (l/min) Flow (l/min)	Temperatura (°C) Temperature (°C)
0702102106	3/8" M	290	24	60



**ZAWÓR BEZPIECZEŃSTWA VT6**  
**SECURITY VALVE VT6**

Nr katalogowy Code	Wejście Inlet	Ciśnienie (bar) Pressure (bar)	Temperatura (°C) Temperature (°C)
0722559004	3/8" M	10	63

**ZAMIENNIKI ZAWORÓW**  
**ALTERNATIVE OF VALVES**

ORYGINAŁ ORIGINAL	ZAMIENNIK ALTERNATIVE
Pulsar 4 VB 9 ST 261 VB 56 / VB 57 VT 6	VRT 3 VRC 25 VRC 25 VRF 2 / VRF 2 INJEKTOR ML 610

### NAGRZEWNICA PIONOWA VERTICAL HEATER

Nr katalogowy Code	Typ Type	Ciśnienie (bar) Pressure (bar)	Przepływ (l/min) Flow (l/min)	Waga (kg) Weight (kg)
0587299110	T2000/1	220	13	37
0587299111	T2000/2	220	18	49
0587299112	T2000/3	220	21	65



### NAGRZEWNICA POZIOMA HORIZONTAL HEATER

Nr katalogowy Code	Typ Type	Ciśnienie (bar) Pressure (bar)	Przepływ (l/min) Flow (l/min)	Waga (kg) Weight (kg)
0587299113	T95/1	170	8	30
0587299114	T95/2	200	10	35
0587299115	T95/3	200	13	40
0587299117	T2007/S	200	25-30	98
0587299118	T2007/S	200	30-35	98



### SILNIK ELEKTRYCZNY Z WAŁEM ELECTRIC MOTOR WITH SHAFT

400 V / 50 Hz - 1400 RPM

Nr katalogowy Code	Moc Power
1271804034	3 HP 2,2 kW
1271804035	4 HP 2,9 kW
1271804036	5,5 HP 4,0 kW
1271804037	7,5 HP 5,5 kW
1271804038	10 HP 7,5 kW
1271804039	20 HP 15 kW



### SILNIK ELEKTRYCZNY BEZ WAŁU ELECTRIC MOTOR WITHOUT SHAFT

400 V / 50 Hz - 1400 RPM

Nr katalogowy Code	Moc Power
1250404018	3 HP 2,2 kW
1271804032	4 HP 2,9 kW
1271804030	5,5 HP 4,0 kW
1271804033	7,5 HP 5,5 kW
1271804031	10 HP 7,5 kW



### POMPOSILNIK MOTORPUMPS UNITS

1450 RPM

Nr katalogowy Code	Moc Power	Ciśnienie Pressure	Przepływ Flow
0200099003	4,0 HP 3,0 kW	100 bar	15 l/min
0200099000	5,5 HP 4,0 kW	150 bar	15 l/min
0200099001	7,5 HP 5,5 kW	200 bar	15 l/min
0200099006	10 HP 7,5 kW	200 bar	21 l/min
0200099004	7,5 HP 5,5 kW	200 bar	15 l/min




**POMPY  
PUMPS**
**Annovi Reverberi**

Nr katalogowy Code	Typ Type	Ciśnienie (bar) Pressure (bar)	Przepływ (l/min) Flow (l/min)	Obroty RPM	Moc (kW) Power (kW)
0272779901	RK 15.20HN	200	15	1450	5,5
0272779900	XT 11.14N	140	11	1450	3,0
0272779902	XT 9.14N	140	9	1450	2,4
0272779905	RK 21.15HN	150	21	1450	5,5
0272779903	XT 13.15N	150	13	1450	3,6
0272779907	RK 13.20HN	200	13	1450	5,5
0272779908	RK 15.25HN	250	15	1450	7,5


**POMPY  
PUMPS**
**CAT**

Nr katalogowy Code	Typ Type	Ciśnienie (bar) Pressure (bar)	Przepływ (l/min) Flow (l/min)	Obroty RPM	Moc (kW) Power (kW)
0226407100	340	150	13	1420	4,1
0226407101	350	150	15	1420	4,6
0226407105	3 CP - 1120	150	13	1420	4,0
02264071053	3 CP - 1140	150	13	1420	4,0
0226407106	5 CP - 2150	175	15	1420	7,8


**POMPY  
PUMPS**
**Comet**

Nr katalogowy Code	Typ Type	Ciśnienie (bar) Pressure (bar)	Przepływ (l/min) Flow (l/min)	Obroty RPM	Moc (kW) Power (kW)
0223379903	AXD 2520 G	138	9,6	3400	2,8
0223379907	LW 3016 S	110	11,2	1450	2,2
0223379908	LW 3517 S	117	13,4	1450	3,0
0223379909	FW2 4022 S	152	15,4	1450	4,0
0223379910	FW2 4030 S	207	15,2	1450	5,5
0223379911	FW2 5530 S	207	21,0	1450	7,7
0000000717	RW 4030 S	207	15,6	1450	5,9
0223379901	TW 8030 S	207	32,9	1450	12,7
0225599095	TWN 4070 S	503	16,8	1450	13,8
0225599096	TWN 5070 S	503	19,9	1450	18,6
0223379919	TW 5570 S	503	22,0	1450	20,5


**POMPY  
PUMPS**
**HAWK**

Nr katalogowy Code	Typ Type	Ciśnienie (bar) Pressure (bar)	Przepływ (l/min) Flow (l/min)	Obroty RPM	Moc (kW) Power (kW)
0277907001	HD 1415R	150	14	1450	4,0
0277907000	NMT 1520	200	15	1450	5,7
0277907002	NMT 1220	200	12,5	1450	4,7
0277907003	NHD 1215	150	12	1450	2,7

**POMPY  
PUMPS**
**INTERPUMP**

Nr katalogowy Code	Typ Type	Ciśnienie (bar) Pressure (bar)	Przepływ (l/min) Flow (l/min)	Obroty RPM	Moc (kW) Power (kW)
0225599063	HT 4715 R	160	15	1450	4,56
0225599064	HT 4715 L	160	15	1450	4,56
0222599052	W 91	90	13	1450	2,20
0222599053	W 98	100	11	1450	2,20
0225599059	WS 101	100	15	1450	2,94
0225599050	WS 151	150	15	1450	4,04
0225599071	WS 152	150	21	1450	5,51
0225599055	WS 201	200	15	1450	5,51
0225599056	WS 202	200	21	1450	7,35
0225599051	WW 141	140	11,5	2800	2,94
0225599057	WW 156R	150	15	2800	4,04
0225599060	W 140 R	140	12	1450	2,94
0225599061	W 140 L	140	12	1450	2,94
0225599092	W 5015	500	15	1450	14,70
0225599098	W 5018	500	18	1450	17,40
0225599054	EL 1714V	170	14	1450	4,56
0225507104	FE 5101R	100	1	1450	0,21
0225599090	FE 5102R	100	2	1450	0,42
0225599058	FE 5104R	100	4	1450	0,79
0225599068	FE 5106	100	6	1450	1,23
0225599062	FE 5108R	100	8	1450	1,55
0225599065	HTS 6311	140	11	1450	2,94



**Inne modele dostępne na zamówienie**

**Other models available on request**


**PODKŁADKA - PASUJE DO KÄRCHER**  
**WASHER - SUITABLE FOR KÄRCHER**

Nr katalogowy Code	Typ Type	Materiał Material
0700199511	"K" 14 x 24	plastik / plastic
0700199512	"K" 18 x 28	plastik / plastic
0700199513	"K" 20 x 30	plastik / plastic
0700199514	"K" 22 x 32	plastik / plastic


**USZCZELNIENIE - PASUJE DO KÄRCHER**  
**SEAL - SUITABLE FOR KÄRCHER**

Nr katalogowy Code	Typ Type	Ciśnienie Pressure
0100503914	"K" 12 x 20	wysokie / high
0200107023	"K" 14 x 20	niskie / low
0200107000	"K" 14 x 22	wysokie / high
0200107022	"K" 14 x 22	wysokie / high
0200107002	"K" 18 x 26	wysokie / high
0200107005	"K" 18 x 28	niskie / low
0200107014	"K" 20 x 28	wysokie / high
0200107024	"K" 20 x 30	niskie / low
0200107010	"K" 22 x 30	wysokie / high
0200107007	"K" 22 x 32	niskie / low
0200107015	"K" 24 x 34	wysokie / high


**USZCZELNIENIE OLEJOWE - PASUJE DO KÄRCHER**  
**OIL SEAL - SUITABLE FOR KÄRCHER**

Nr katalogowy Code	Typ Type
0200107063	"K" 14 x 22 x 5/7
0226307100	"K" 18 x 26 x 6/8
0226307115	"K" 20 x 28 x 6/8
0226307120	"K" 22 x 35


**NURNIK PORCELANOWY - PASUJE DO KÄRCHER**  
**CERAMIC PISTON - SUITABLE FOR KÄRCHER**

Nr katalogowy Code	Średnica Bore	Długość Length
0200109000	18 mm	30 mm
0200109001	20 mm	35 mm


**ZAWÓR - PASUJE DO KÄRCHER**  
**VALVE - SUITABLE FOR KÄRCHER**

Nr katalogowy Code	Ilość Quantity	Typ Type
0200107012	6	"K" 18
0200107013	6	"K" 22



ANNOVI HPE							
Typ pompy Type	Zawory / Valves		Komplet uszczelnień	Seal kits	Uszczelnienia olejowe	Oil seals	Nurnik / Piston
	KIT 1864	KIT 1866	KIT 1874		KIT 1865	KIT 2628	KIT 2629
HPE 8.12 A 1450	●	●			●	●	
HPE 8.12 A 2800	●	●			●	●	
HPE 8.14 1450	●	●			●	●	
HPE 8.14 2800	●	●			●	●	
HPE 9.11 1450	●		●		●		●
HPE 9.14 1450	●		●		●		●
HPE 10.10 1450	●		●		●		●
HPE 10.10 2800	●	●			●	●	
HPE 10.12 A 1450	●		●		●		●
HPE 10.12 A 2800	●	●			●	●	
HPE 11.09 1450	●		●		●		●

ANNOVI HPE							
Typ pompy Type	Zawory / Valves		Komplet uszczelnień	Seal kits	Uszczelnienia olejowe	Oil seals	Nurnik / Piston
	KIT 1864	KIT 1866	KIT 1874		KIT 1865	KIT 2628	KIT 2629
HPE 11.09 2800	●	●			●	●	
HPE 11.11 1450	●		●		●		●
HPE 11.11 2800	●	●			●	●	
HPE 11.14 2800	●	●			●	●	
HPE 13.09 2800	●	●			●	●	
HPE 13.10 1450	●		●		●		●
HPE 13.12 2800	●	●			●	●	
HPE 2 G15 1750	●	●			●	●	
HPE 2 G18 1750	●	●			●	●	
HPE 3 G13 1750	●		●		●		●
HPE 3.5 G10 1750	●		●		●		●

**KIT 1864**  
0272707100



ilość / quantity 2x6

**KIT 1866**  
0272707102

Ø 15



ilość / quantity 6x3

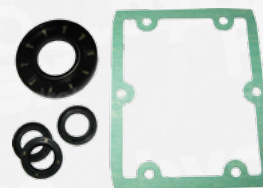
**KIT 1874**  
0272707101

Ø 18



ilość / quantity 4x3

**KIT 1865**  
0272707118



ilość / quantity 5x1

**KIT 2628**  
0272709000

Ø 15x30



ilość / quantity 1x3

**KIT 2629**  
0272709001

Ø 18x30



ilość / quantity 1x3

KIT 1864  
0272707100



ilość / quantity 2x6

KIT 1866  
0272707102

Ø 15



ilość / quantity 6x3

KIT 2520  
0272707119

Ø 15



ilość / quantity 6x3

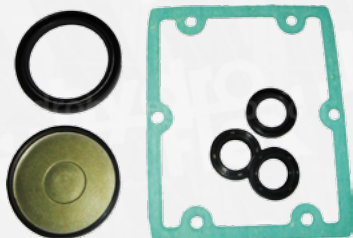
KIT 1874  
0272707101

Ø 18



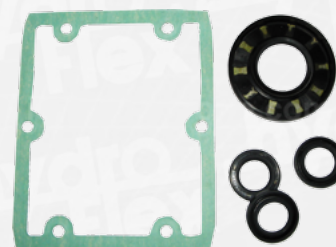
ilość / quantity 4x3

KIT 1860  
0272707120



ilość / quantity 6x1

KIT 1872  
0272707103



ilość / quantity 5x1

KIT 2628  
0272709000

Ø 15x30



ilość / quantity 1x3

KIT 2629  
0272709001

Ø 18x30



ilość / quantity 1x3

ANNOVI XT								
Typ pompy Type	Zawory / Valves		Komplet uszczelnień Seal kits		Uszczelnienia olejowe Oil seals		Nurnik / Piston	
	KIT 1864	KIT 1866	KIT 2520	KIT 1874	KIT 1860	KIT 1872	KIT 2628	KIT 2629
XT 8.10 C	●	●			●		●	
XT 8.10 N	●	●				●	●	
XT 8.12 A C	●	●			●		●	
XT 8.12 A N	●	●				●	●	
XT 8.12 N	●	●				●	●	
XT 8.14 C	●	●			●		●	
XT 8.14 N	●	●				●	●	
XT 8.15 N	●	●				●	●	
XT 9.11 C	●			●	●			●
XT 9.11 N	●	●				●	●	
XT 9.14 C	●			●	●			●
XT 9.14 N	●			●		●	●	
XT 9.15 N	●			●		●	●	
XT 10.10 N	●			●		●	●	
XT 10.12 A N	●			●		●	●	
XT 10.15 N	●			●		●	●	
XT 11.07 N	●			●		●	●	
XT 11.09 C	●			●	●		●	
XT 11.09 N	●			●		●	●	
XT 11.11 C	●			●	●		●	
XT 11.11 N	●			●		●	●	
XT 11.14 N	●			●		●	●	
XT 11.15 N	●			●		●	●	
XT 13.09 C	●			●	●		●	
XT 13.09 N	●			●		●	●	
XT 13.12 A N	●			●		●	●	
XT 13.12 N	●			●		●	●	
XT 13.15 N	●			●		●	●	
XTA 2 G15 E	●	●			●		●	
XTA 2 G15 N	●	●				●	●	
XTA 2 G20 E	●	●			●		●	
XTA 2 G20 N	●	●				●	●	
XTA 2 G22 N	●	●				●	●	
XTA 3 G16 E	●		●		●			●
XTA 3 G16 N	●	●				●	●	
XTA 3 G19 E	●		●		●			●
XTA 3 G19 N	●		●			●	●	
XTA 3 G22 N	●		●			●	●	
XTA 3.5 G13 E	●		●		●			●
XTA 3.5 G13 N	●		●			●	●	
XTA 3.5 G17 E	●		●		●			●
XTA 3.5 G17 N	●		●			●	●	
XTA 3.5 G20 N	●		●			●	●	
XTA 4 G10 N	●		●			●	●	
XTA 4 G15 E	●		●		●			●
XTA 4 G15 N	●		●			●	●	
XTS 8.10 C	●	●			●		●	
XTS 8.10 D	●	●			●		●	
XTS 8.10 N	●	●				●	●	
XTS 8.12 A C	●	●			●		●	

ANNOVI XT								
Typ pompy Type	Zawory / Valves		Komplet uszczelnień Seal kits		Uszczelnienia olejowe Oil seals		Nurnik / Piston	
	KIT 1864	KIT 1866	KIT 2520	KIT 1874	KIT 1860	KIT 1872	KIT 2628	KIT 2629
XTS 8.12 A D	●	●			●		●	
XTS 8.12 A N	●	●				●	●	
XTS 8.14 N	●	●				●	●	
XTS 8.14 C	●	●			●		●	
XTS 8.14 D	●	●			●		●	
XTS 8.14 N	●	●				●	●	
XTS 8.15 N	●	●				●	●	
XTS 10.10 N	●	●				●	●	
XTS 10.12 A N	●	●				●	●	
XTS 10.15 N	●	●				●	●	
XTS 11.09 C	●	●			●		●	
XTS 11.09 N	●	●				●	●	
XTS 11.11 C	●	●			●		●	
XTS 11.11 D	●	●			●		●	
XTS 11.11 N	●	●				●	●	
XTS 11.14 C	●	●			●		●	
XTS 11.14 D	●	●			●		●	
XTS 11.14 N	●	●				●	●	
XTS 11.15 N	●	●				●	●	
XTS 13.09 C	●	●			●		●	
XTS 13.09 D	●	●			●		●	
XTS 13.09 N	●	●				●	●	
XTS 13.13 A N	●	●				●	●	
XTS 13.12 C	●	●			●		●	
XTS 13.13 D	●	●			●		●	
XTS 13.13 N	●	●				●	●	
XTS 13.15 N	●	●				●	●	
XTV 2 G15 D	●			●			●	
XTV 2 G15 E	●			●			●	
XTV 2 G15 N	●			●			●	
XTV 2 G18 D	●			●			●	
XTV 2 G18 N	●			●			●	
XTV 2 G20 D	●			●			●	
XTV 2 G20 E	●			●			●	
XTV 2 G20 N	●			●			●	
XTV 2 G22 D	●			●			●	
XTV 2 G22 E	●			●			●	
XTV 2 G22 N	●			●			●	
XTV 3 G10 D	●			●			●	
XTV 2 G10 E	●			●			●	
XTV 3 G10 N	●			●			●	
XTV 3 G16 D	●			●			●	
XTV 3 G16 E	●			●			●	
XTV 3 G16 N	●			●			●	
XTV 3 G18 N	●			●			●	
XTV 3 G20 D	●			●			●	
XTV 3 G20 E	●			●			●	
XTV 3 G20 N	●			●			●	
XTV 3 G22 D	●			●			●	
XTV 3 G22 N	●			●			●	

KIT 1864  
0272707100



ilość / quantity 2x6

KIT 2125  
0272707121



ilość / quantity 2x6

KIT 2741  
0272707122

Ø 15



ilość / quantity 3x3

KIT 2747  
0200107111

Ø 18



ilość / quantity 3x3

KIT 2786  
0272707123



ilość / quantity 6x1

KIT 2787  
0272707124



ilość / quantity 6x1

KIT 2739  
0272707125

Ø 15x35



ilość / quantity 1x3

KIT 2746  
0272707126

Ø 18x35



ilość / quantity 1x3

ANNOVI XM								
Typ pompy Type	Zawory / Valves		Komplet uszczelnień Seal kits		Uszczelnienia olejowe Oil seals		Nurnik / Piston	
	KIT 1864	KIT 2125	KIT 2741	KIT 2747	KIT 2786	KIT 2787	KIT 2739	KIT 2746
GXMV 4 G30 + F35	●		●			●	●	
SXM 11.20 C	●		●			●	●	
SXM 11.20 N	●		●		●		●	
SXM 13.20 C	●			●		●		●
SXM 13.20 N	●			●	●			●
SXM 15.20 C	●			●		●		●
SXM 15.20 N	●			●	●			●
SXMA 3 G30 N	●		●		●		●	
SXMA 3.5 G30 N	●		●		●		●	
SXMA 4 G30 J+F22	●			●		●		●
SXMA 4 G30 N	●			●	●			●
SXMS 11.20 C		●	●			●	●	
SXMS 11.20 N		●	●		●		●	
SXMS 13.20 C		●	●			●	●	
SXMS 13.20 N		●	●		●		●	
SXMS 15.20 C		●	●			●	●	
SXMS 15.20 N		●	●		●		●	
SXMS 17.20 N		●	●		●		●	
SXMV 3 G35 D+F40	●	●	●			●	●	
SXMV 3 G35 N	●	●	●		●		●	
SXMV 3.5 G35 D+F40	●	●	●			●	●	
SXMV 3.5 G35 N	●	●	●		●		●	
SXMV 4 G35 D+F40	●	●	●			●	●	
SXMV 4 G35 N	●	●	●		●		●	
XM 11.17 C	●		●			●	●	
XM 11.17 N	●		●		●		●	
XM 13.17 C	●			●		●		●
XM 13.17 N	●			●	●		●	●
XM 15.15 C	●			●		●		●
XM 15.15 N	●			●		●		●
XMA 2 G10 E	●		●			●	●	
XMA 2 G15 E	●		●			●	●	
XMA 2 G22 E	●		●			●	●	
XMA 2.5 G18 E	●		●			●	●	
XMA 3 G18 E	●		●			●	●	
XMA 3 G25 E	●		●			●	●	
XMA 3 G25 J+F22	●		●			●	●	
XMA 3 G25 N	●		●		●		●	
XMA 3.5 G22 E	●		●			●	●	
XMA 3.5 G22 J+F22	●		●			●	●	
XMA 3.5 G22 N	●		●		●		●	
XMA 3.5 G25 E	●		●			●	●	

ANNOVI XM								
Typ pompy Type	Zawory / Valves		Komplet uszczelnień Seal kits		Uszczelnienia olejowe Oil seals		Nurnik / Piston	
	KIT 1864	KIT 2125	KIT 2741	KIT 2747	KIT 2786	KIT 2787	KIT 2739	KIT 2746
XMA 3.5 G25 J+F22	●		●			●	●	
XMA 3.5 G25 N	●		●		●		●	
XMA 4 G20 E	●			●		●		●
XMA 4 G20 J+F22	●			●		●		●
XMA 4 G20 N	●			●	●			●
XMS 11.17 C	●			●		●	●	
XMS 11.17 N	●			●		●	●	
XMS 13.17 C	●			●		●	●	
XMS 13.17 N	●			●		●	●	
XMS 15.15 C	●			●		●	●	
XMS 15.15 N	●			●		●	●	
XMS 15.20 N	●			●		●	●	
XMS 17.16 N	●			●		●	●	
XMT 11.11 N	●			●		●	●	
XMTA 3.5 G22 N	●			●		●	●	
XMV 2 G10 E+F32	●			●		●	●	
XMV 2 G15 E+F32	●			●		●	●	
XMV 2 G22 E+F32	●			●		●	●	
XMV 2.5 G18 E+F32	●			●		●	●	
XMV 3 G18 E+F32	●			●		●	●	
XMV 3 G25 D+F25	●			●		●	●	
XMV 3 G25 D+F40	●			●		●	●	
XMV 3 G25 N	●			●	●		●	
XMV 3 G30 D+F25	●			●		●	●	
XMV 3 G30 D+F40	●			●		●	●	
XMV 3 G30 N	●			●	●		●	
XMV 3.5 G22 D+F25	●			●		●	●	
XMV 3.5 G22 D+F40	●			●		●	●	
XMV 3.5 G22 N	●			●	●		●	
XMV 3.5 G25 D+F25	●			●		●	●	
XMV 3.5 G25 D+F40	●			●		●	●	
XMV 3.5 G25 N	●			●	●		●	
XMV 3.5 G30 D+F40	●			●		●	●	
XMV 4 G20 D+F40	●			●		●	●	
XMV 4 G20 N	●			●	●		●	
XMV 4 G22 D+F40	●			●		●	●	
XMV 4 G22 N	●			●	●		●	
XMV 4 G25 D+F40	●			●		●	●	
XMV 4 G25 N	●			●	●		●	
XMV 4 G30 D+F40	●			●		●	●	
XMV 4 G30 N	●			●	●		●	

KIT 1828  
0272707108



ilość / quantity 2x6

KIT 2864  
0272707105



ilość / quantity 2x6

KIT 1857  
0272707107

Ø 18



ilość / quantity 3x3

KIT 1887  
0272707128

Ø 20



ilość / quantity 3x3

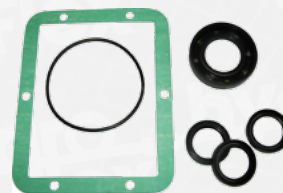
KIT 1888  
0272707109

Ø 22



ilość / quantity 3x3

KIT 1855  
0272707104



ilość / quantity 6x1

KIT 1856  
0272707106



ilość / quantity 7x1

KIT 2757  
0272709100

Ø 18x40



ilość / quantity 1x3

KIT 2758  
0272707129

Ø 20x40



ilość / quantity 1x3

KIT 2759  
0272707130

Ø 22x40



ilość / quantity 1x3

ANNOVI RK										
Typ pompy Type	Zawory / Valves		Komplet uszczelnień		Uszczelnienia olejowe		Nurnik / Piston			
	KIT 1828	KIT 2864	KIT 1857	KIT 1887	KIT 1888	KIT 1855	KIT 1856	KIT 2757	KIT 2758	KIT 2759
RK 11.14 N		●	●			●		●		
RK 11.20 H N		●	●			●		●		
RK 11.20 H C		●	●				●	●		
RK 11.25 H N		●	●			●		●		
RK 13.12 N		●	●			●		●		
RK 13.12 C		●	●				●	●		
RK 13.17 C		●	●				●	●		
RK 13.17 N		●	●			●		●		
RK 13.20 H C		●	●				●	●		
RK 13.20 H N		●	●			●		●		
RK 14.16 C		●	●				●	●		
RK 14.16 N		●	●			●		●		
RK 15.15 C		●	●				●	●		
RK 15.15 N		●	●			●		●		
RK 15.20 H C		●	●				●	●		
RK 15.20 H N		●	●			●		●		
RK 15.25 H N		●	●			●		●		
RK 15.28 H N		●	●			●		●		
RK 18.12 C		●		●			●		●	
RK 18.12 N		●		●		●		●		
RK 18.16 H C		●		●			●	●		
RK 18.16 H N		●		●		●		●		
RK 18.20 H N		●		●		●		●		
RK 18.28 H N		●		●		●		●		
RK 21.10 C		●			●		●		●	
RK 21.10 N		●			●		●		●	
RK 21.15 H C		●			●		●		●	
RK 21.15 H N		●			●		●		●	
RK 21.20 H N		●			●		●		●	
RKA 3.5 G22 N		●	●			●		●		
RKA 3.5 G25 E		●	●				●	●		
RKA 3.5 G25 N		●	●			●		●		
RKA 3.5 G30 H E		●	●				●	●		
RKA 3.5 G30 H N		●	●			●		●		
RKA 3.5 G40 H N		●	●			●		●		
RKA 4 G20 E		●	●				●	●		
RKA 4 G20 J+F22		●	●				●	●		
RKA 4 G20 N		●	●			●		●		
RKA 4 G30 A N		●	●			●		●		
RKA 4 G30 N		●	●			●		●		

ANNOVI RK										
Typ pompy Type	Zawory / Valves		Komplet uszczelnień		Uszczelnienia olejowe		Nurnik / Piston			
	KIT 1828	KIT 2864	KIT 1857	KIT 1887	KIT 1888	KIT 1855	KIT 1856	KIT 2757	KIT 2758	KIT 2759
RKA 4 G30 H E		●	●				●		●	
RKA 4 G30 H J+F22		●	●				●		●	
RKA 4 G30 H N		●	●			●		●		
RKA 4 G36 H N		●	●			●		●		
RKA 4 G40 H N		●	●			●		●		
RKA 4.5 G17 N		●	●			●		●		
RKA 4.5 G25 H N		●	●			●		●		
RKA 4.5 G30 H N		●	●			●		●		
RKA 4.5 G40 H N		●	●			●		●		
RKA 5.5 G13 E		●		●			●		●	
RKA 5.5 G13 N		●		●		●		●		
RKA 5.5 G20 H N		●		●		●		●		
RKA 5.5 G26 H N		●		●		●		●		
RKA 5.5 G30 H N		●		●		●		●		
RKA 6.5 G13 E		●			●		●		●	
RKA 6.5 G13 N		●			●		●		●	
RKA 6.5 G20 H N		●			●		●		●	
RKA 7 G13 E		●			●		●		●	
RKA 7 G13 N		●			●		●		●	
RKA 7 G20 H E		●			●		●		●	
RKA 7 G20 H N		●			●		●		●	
RKV 3.5 G25 D+F41	●		●				●		●	
RKV 3.5 G25 E+F32	●		●				●		●	
RKV 3.5 G30H D+F41	●		●				●		●	
RKV 3.5 G35H D+F41	●		●				●		●	
RKV 3.5 G40H D+F41	●		●				●		●	
RKV 4 G20 E+F32	●		●				●		●	
RKV 4 G30A D+F41	●		●				●		●	
RKV 4 G30 D+F41	●		●				●		●	
RKV 4 G32 D+F41	●		●				●		●	
RKV 4 G35H D+F41	●		●				●		●	
RKV 4 G40H D+F41	●		●				●		●	
RKV 4.5 G17 E+F32	●		●				●		●	
RKV 4.5 G40H D+F41	●		●				●		●	
RKV 5.5 G13 E+F32	●		●				●		●	
RKV 5.5 G40H D+F41	●		●				●		●	
GRKV 4 G30A +F35	●		●				●		●	
GRKV 4 G30 +F35	●		●				●		●	
GRKV 4 G35H +F35	●		●				●		●	

30821  
0226407008



ilość / quantity 2x3

33062  
0226407012



ilość / quantity 3x3

30623  
0226407009      Ø 20



ilość / quantity 5x3

33983  
0226407010      Ø 18



ilość / quantity 4x3

33628  
0226407036      Ø 20



ilość / quantity 4x3

43228  
0226401006



ilość / quantity 1

46839  
0226401004



ilość / quantity 1

46838  
0226401005



ilość / quantity 1

43367  
0226409018      Ø 20x72



ilość / quantity 1

46976  
0226401001      Ø 18x43



ilość / quantity 1

46841  
0226409021      Ø 20x50



ilość / quantity 1



CAT														
Typ pompy Type	Zawory / Valves		Komplet uszczelnień Seal kits			Uszczelnienia olejowe Oil seals			Nurnik / Piston			Głowica / Head		
	30821	33062	30623	33983	33628	43228	46839	46838	43367	46976	46841	810027	814841	816650
310	●		●			●			●			●		
310 W	●		●			●			●			●		
340	●		●			●			●			●		
340 W	●		●			●			●			●		
350	●		●			●			●			●		
350 W	●		●			●			●			●		
3CP 1120		●		●			●			●			●	
3CP 1130		●		●			●			●			●	
3CP 1140		●		●			●			●			●	
5CP 2120W	●				●			●			●			●
5CP 2140W	●				●			●			●			●
5CP 2150W	●				●			●			●			●

0200107040



ilość / quantity 3x6

0200107095

Ø 20



ilość / quantity 5x2

0200107047

Ø 20



ilość / quantity 8x1

0200107048

Ø 20x30x7



ilość / quantity 1x3

0200107096

Ø 25x42x7



ilość / quantity 1

0200109044

Ø 20x38x11



ilość / quantity 1

HAWK - D

Typ pompy Type	Zawory / Valves	Komplet uszczelnień Seal kits	Uszczelnienia olejowe Oil seals	Nurmik / Piston		
	0200107040	0200107095	0200107047	0200107048	0200107096	0200109044
HC165 AL	●	●	●	●	●	●
HC165 AR	●	●	●	●	●	●
HC168 R	●			●	●	●
HC170	●	●	●	●	●	●
HC170 L	●	●	●	●	●	●
HC170 R	●	●	●	●	●	●
HC190	●	●	●	●	●	●
HC190 L	●	●	●	●	●	●
HC190 R	●	●	●	●	●	●

### HAWK - SST

Typ pompy Type	Zawory / Valves	Komplet uszczelnień Seal kits	Uszczelnienia olejowe Oil seals	Nurmik / Piston		
	0200107039	0200107085	0200107038	0200107041	0200107097	0200109042
HC310 L	●	●	●	●	●	●
HC310 R	●	●	●	●	●	●
HC320 L	●	●	●	●	●	●
HC320 R	●	●	●	●	●	●
HC330 L	●	●	●	●	●	●
HC330 R	●	●	●	●	●	●
HC340 L	●	●	●	●	●	●
HC340 R	●	●	●	●	●	●
HC350 L	●	●	●	●	●	●
HC350 R	●	●	●	●	●	●
HC370 L	●	●	●	●	●	●
HC370 R	●	●	●	●	●	●
HS310	●			●	●	●
HS330 L	●			●	●	●
HS330 R	●			●	●	●
HS335 CL	●			●	●	●
HS335 CR	●			●	●	●
HS340 L	●			●	●	●
HS340 R	●			●	●	●
HS350 L	●			●	●	●
HS350 R	●			●	●	●
HS370 L	●			●	●	●
HS370 R	●			●	●	●

0200107039



ilość / quantity 3x6

0200107085

Ø 18



ilość / quantity 5x3

0200107038

Ø 18



ilość / quantity 8x1

0200107041

Ø 16x24x5



ilość / quantity 1x3

0200107097

Ø 25x62x10



ilość / quantity 1

0200109042

Ø 18x39x9



ilość / quantity 1

0200107040



ilość / quantity 3x6

0200107087



ilość / quantity 3x6

0200107085

Ø 18



ilość / quantity 5x3

0200107086

Ø 20



ilość / quantity 5x3

0200107050

Ø 18



ilość / quantity 8x1

0200107051

Ø 20



ilość / quantity 8x1

0200107044

Ø 20



ilość / quantity 8x1

0200107041

Ø 16



ilość / quantity 1x3

0200107048

Ø 20



ilość / quantity 1x3

0200107096

Ø 25



ilość / quantity 1

0200107098

Ø 25



ilość / quantity 1

0200109049

Ø 18x46



ilość / quantity 1

0200109043

Ø 20x46



ilość / quantity 1

HAWK - ST, MT, MTI													
Typ pompy Type	Zawory / Valves		Komplet uszczelnień Seal kits		Uszczelnienia olejowe Oil seals		Nurnik / Piston						
	0200107040	0200107087	0200107085	0200107086	0200107050	0200107051	0200107044	0200107041	0200107048	0200107096	0200107098	0200109049	0200109043
<b>ST</b>													
HC200 A	●		●		●				●	●			
HC200 AL	●		●		●				●	●			
HC200 AR	●		●		●				●	●			
HC205 AL	●		●		●				●	●			
HC205 AR	●		●		●				●	●			
HC215 R	●			●		●			●	●			●
HC235 R	●			●		●			●	●			●
HC240 A	●		●		●				●	●			
HC240 AL	●		●		●				●	●			
HC240 AR	●		●		●				●	●			
HC240 I	●		●		●				●	●			
HC240 IL	●		●		●				●	●			
HC240 IR	●		●		●				●	●			
HC280 A	●		●		●				●	●			
HC280 AL	●		●		●				●	●			
HC280 AR	●		●		●				●	●			
<b>MT</b>													
H300	●	●		●			●					●	
H300 L	●	●		●			●					●	
H300 R	●	●		●			●					●	
H306	●	●		●			●					●	
H306 R	●	●		●			●					●	
H306 A	●	●		●			●					●	
H400	●	●		●			●					●	
H406	●	●		●			●					●	
HC450	●	●		●			●					●	
HC450 L	●	●		●			●					●	
HC450 R	●	●		●			●					●	
HC456	●	●		●			●					●	
HC456 L	●	●		●			●					●	
HC456 R	●	●		●			●					●	
HC460 L	●	●		●			●					●	
HC460 R	●	●		●			●					●	
HC500	●	●		●			●					●	
HC500 L	●	●		●			●					●	
HC500 R	●	●		●			●					●	
HC506	●	●		●			●					●	

HAWK - ST, MT, MTI													
Typ pompy Type	Zawory / Valves		Komplet uszczelnień Seal kits		Uszczelnienia olejowe Oil seals		Nurnik / Piston						
	0200107040	0200107087	0200107085	0200107086	0200107050	0200107051	0200107044	0200107041	0200107048	0200107096	0200107098	0200109049	0200109043
<b>MT</b>													
HC506 L	●							●					
HC506 R	●	●						●					
HC530 L	●	●						●					
HC530 R	●	●						●					
HC536 L	●	●						●					
HC536 R	●	●						●					
HC550	●	●						●					
HC556	●	●						●					
HC580 L	●	●						●					
HC580 R	●	●						●					
HC586 L	●	●						●					
HC586 R	●	●						●					
<b>MTI</b>													
HC450 IL	●							●					
HC450 IR	●							●					
HC450 SIL	●							●					
HC450 SIR	●							●					
HC456 IL	●							●					
HC456 IR	●							●					
HC456 SIL	●							●					
HC456 SIR	●							●					
HC500 IL	●							●					
HC500 IR	●							●					
HC500 SIL	●							●					
HC500 SIR	●							●					
HC506 IL	●							●					
HC506 IR	●							●					
HC506 SIL	●							●					
HC506 SIR	●							●					
HC550 IL	●							●					
HC550 IR	●							●					
HC556 IL	●							●					
HC556 IR	●							●					
HC570 IL	●							●					
HC570 IR	●							●					
HC576 IL	●							●					
HC576 IR	●							●					

0200107040



ilość / quantity 3x6

0200107099

Ø 20



ilość / quantity 5x3

0200107112

Ø 22



ilość / quantity 5x3

0200107113

Ø 25



ilość / quantity 5x3

0200107049

Ø 20



ilość / quantity 8x1

0200107052

Ø 22



ilość / quantity 8x1

0200107053

Ø 25



ilość / quantity 8x1

0200107048

Ø 20



ilość / quantity 1x3

0200107114

Ø 30



ilość / quantity 1

0200109045

Ø 20x53



ilość / quantity 1

0200109002

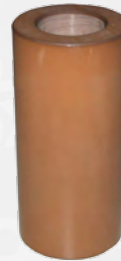
Ø 22x53



ilość / quantity 1

0200109003

Ø 25x53



ilość / quantity 1

HAWK - LT, LTI												
Typ pompy Type	Zawory / Valves			Komplet uszczelnień Seal kits				Uszczelnienia olejowe Oil seals		Nurmik / Piston		
	0200107040	0200107099	0200107112	0200107113	0200107049	0200107052	0200107053	0200107048	0200107114	0200109045	0200109002	0200109003
<b>LT</b>												
H450	●	●			●			●	●	●		
H500	●		●			●		●	●		●	
H600				●			●	●	●			●
H700	●			●			●	●	●			●
H700 R	●			●			●	●	●			●
HC600	●	●			●			●	●	●		
HC650	●		●			●		●	●		●	
HC650 L	●		●			●		●	●		●	
HC650 R	●		●			●		●	●		●	
HC700				●			●	●	●			●
HC800	●			●			●	●	●			●
HC800 L	●			●			●	●	●			●
HC800 R	●			●			●	●	●			●
<b>LTI</b>												
HC600 IR	●	●			●			●	●	●		
HC650 IL	●		●			●		●	●		●	
HC650 IR	●		●			●		●	●		●	
HC800 IL	●			●			●	●	●			●
HC800 IR	●			●			●	●	●			●

0200107045



ilość / quantity 3x6

0200107046



ilość / quantity 3x6

0200107115

Ø 20



ilość / quantity 6x3

0200107116

Ø 22



ilość / quantity 6x3

0200107117

Ø 25



ilość / quantity 6x3

0200107054

Ø 20



ilość / quantity 9x1

0200107055

Ø 22



ilość / quantity 9x1

0200107056

Ø 25



ilość / quantity 9x1

0200107048

Ø 20



ilość / quantity 1x3

0200107114

Ø 30



ilość / quantity 1

0200109045

Ø 20x53



ilość / quantity 1

0200109002

Ø 22x53



ilość / quantity 1

0200109003

Ø 25x53



ilość / quantity 1



### HAWK - XLT

Typ pompy Type	Zawory / Valves		Komplet uszczelnień Seal kits						Uszczelnienia olejowe Oil seals		Nurnik / Piston		
	0200107045	0200107046	0200107115	0200107116	0200107117	0200107054	0200107055	0200107056	0200107048	0200107114	0200109045	0200109002	0200109003
HC930 A	●		●			●			●	●	●		
HC930 AL	●		●			●			●	●	●		
HC930 AR	●		●			●			●	●	●		
HC932 AL	●		●			●			●	●	●		
HC932 AR	●		●			●			●	●	●		
HC932 L	●		●			●			●	●	●		
HC932 R	●		●			●			●	●	●		
HC940 A		●		●			●		●	●		●	
HC940 AL		●		●			●		●	●		●	
HC940 AR		●		●			●		●	●		●	
HC950 A		●			●			●	●	●			●
HC950 AL		●			●			●	●	●			●
HC950 AR		●			●			●	●	●			●
HC960 A		●			●			●	●	●			●
HC960 AL		●			●			●	●	●			●
HC960 AR		●			●			●	●	●			●
HC980 A		●							●	●			
HC980 AL		●							●	●			
HC980 AR		●							●	●			

**KIT 123**  
0225507021



ilość / quantity 2x6

**KIT 88** Ø 15  
0725507000



ilość / quantity 3x3

**KIT 127** Ø 18  
0725507003



ilość / quantity 3x3

**KIT 90** Ø 15  
0225599006



ilość / quantity 1x6

**KIT 129** Ø 18  
0225507045



ilość / quantity 1x6

**KIT 130** Ø 15  
0225507042



ilość / quantity 7x1

**KIT 131** Ø 18  
0225507043



ilość / quantity 7x1

**KIT 23** Ø 20  
0225599027



ilość / quantity 1x3

**0225509005**  
Ø 15x37,5



ilość / quantity 1

**0225509002**  
Ø 18x37,5



ilość / quantity 1

**INTERPUMP - SERIES 44**

Typ pompy Type	Zawory / Valves		Komplet uszczelnień Seal kits				Uszczelnienia olejowe Oil seals	Nurnik / Piston		
	KIT 123	KIT 88	KIT 127	KIT 90	KIT 129	KIT 130	KIT 131	KIT 23	0225509005	0225509002
W97	●		●		●		●		●	
W112	●		●		●		●		●	
W124	●		●		●		●		●	
W130	●	●		●		●		●	●	
W140	●		●		●		●		●	
W150	●		●		●		●		●	
W154	●		●		●		●		●	
W170	●		●		●		●		●	
W950	●		●		●		●		●	
W951	●		●		●		●		●	
W952	●		●		●		●		●	
W953	●	●		●		●		●	●	
W954	●		●		●		●		●	
W955	●		●		●		●		●	
W956	●		●		●		●		●	
W957	●		●		●		●		●	
W958	●		●		●		●		●	
W959	●		●		●		●		●	
WW116	●	●		●		●		●	●	
WW136	●	●		●		●		●	●	
WW156	●	●		●		●		●	●	
WW176	●	●		●		●		●	●	
WW186	●	●		●		●		●	●	
WW189	●	●		●		●		●	●	
WW206	●		●		●		●		●	
WW209	●	●		●		●		●	●	
WW960	●	●		●		●		●	●	
WW961	●	●		●		●		●	●	
WW962	●	●		●		●		●	●	
WW963	●			●		●		●		
WW964	●			●		●		●		
WW965	●			●		●		●		

INTERPUMP - SERIES 47, 48								
Typ pompy Type	Zawory / Valves			Komplet uszczelnień Seal kits		Uszczelnienia olejowe Oil seals	Nurmik / Piston	0225509000
	KIT 1	KIT 4	KIT 5	KIT 69	KIT 7	KIT 28		
<b>INTERPUMP</b>								
W101	●	●		●	●	●	●	●
W131	●	●		●	●	●	●	●
W151	●	●		●	●	●	●	●
W201	●		●	●	●	●	●	●
W203	●	●		●	●	●	●	●
W912	●	●		●	●	●	●	●
W913	●	●		●	●	●	●	●
W916	●		●	●	●	●	●	●
W921	●		●	●	●	●	●	●
WS82	●	●		●	●	●	●	●
WS101	●	●		●	●	●	●	●
WS102	●	●		●	●	●	●	●
WS131	●	●		●	●	●	●	●
WS133	●	●		●	●	●	●	●
WS135	●	●		●	●	●	●	●
WS151	●	●		●	●	●	●	●
WS152	●		●	●	●	●	●	●
WS171	●	●		●	●	●	●	●
WS201	●		●	●	●	●	●	●
WS202	●		●	●	●	●	●	●
<b>GENERALPUMP</b>								
T1011	●	●		●	●	●	●	●
T1311	●	●		●	●	●	●	●
T1511	●	●		●	●	●	●	●
T2011	●		●	●	●	●	●	●
T2031	●	●		●	●	●	●	●
T9121	●	●		●	●	●	●	●
T9131	●	●		●	●	●	●	●
T9161	●		●	●	●	●	●	●
T9211	●		●	●	●	●	●	●
TS821	●	●		●	●	●	●	●
TS1011	●	●		●	●	●	●	●
TS1021	●	●		●	●	●	●	●
TS1311	●	●		●	●	●	●	●
TS1331	●	●		●	●	●	●	●
TS1351	●	●		●	●	●	●	●
TS1511	●	●		●	●	●	●	●
TS1521	●		●	●	●	●	●	●
TS1711	●	●		●	●	●	●	●
TS2011	●		●	●	●	●	●	●
TS2021	●		●	●	●	●	●	●



**KIT 1**  
0225507020



ilość / quantity 2x6

**KIT 4**  
0225599094



ilość / quantity 2x6

**KIT 5**  
0225507101



ilość / quantity 2x6

**INTERPUMP - SERIES 47, 48 Ø22**

Typ pompy Type	Zawory / Valves			Komplet uszczelnień Seal kits			Uszczelnienia olejowe Oil seals		Nurmik / Piston 0225509003
	KIT 1	KIT 4	KIT 5	KIT 148	KIT 11	KIT 29	KIT 2	KIT 24	
<b>INTERPUMP</b>									
W92	●	●		●	●	●	●		●
W132	●	●		●	●	●	●		●
W162	●		●	●	●	●	●		●
W163	●	●		●	●	●		●	●
WS92	●	●		●	●	●	●		●
WS132	●	●		●	●	●	●		●
WS162	●		●	●	●	●	●		●
<b>GENERALPUMP</b>									
T921	●	●		●	●	●	●		●
T1321	●	●		●	●	●	●		●
T1621	●		●	●	●	●	●		●
T1631	●	●		●	●	●		●	●
TS921	●	●		●	●	●	●		●
TS1321	●	●		●	●	●	●		●
TS1621	●		●	●	●	●	●		●

**KIT 148** Ø 22  
0226307223



ilość / quantity 3x3

**KIT 11** Ø 22  
0225599085



ilość / quantity 1x6

**KIT 29** Ø 22  
0225507028



ilość / quantity 7x1

**KIT 2** Ø 22  
0225599001



ilość / quantity 1x3

**KIT 24** Ø 22  
0225099002



ilość / quantity 1x3

**0225509003** Ø 22x50



ilość / quantity 1

## INTERPUMP - SERIES 49, 50

Typ pompy Type	Zawory / Valves		Komplet uszczelnień Seal kits			Uszczelnienia olejowe Oil seals	Nurmik / Piston		
	KIT 1	KIT 4	KIT 88	KIT 19	KIT 92	KIT 27	KIT 23	0225509005	0225509001
<b>INTERPUMP</b>									
W52	•	•	•	•	•	•	•	•	•
W53	•	•	•	•	•	•	•	•	•
W70	•	•	•	•	•	•	•	•	•
W71	•	•	•	•	•	•	•	•	•
W72	•	•	•	•	•	•	•	•	•
W73	•	•	•	•	•	•	•	•	•
W91	•	•	•	•	•	•	•	•	•
W98	•	•	•	•	•	•	•	•	•
W99	•	•	•	•	•	•	•	•	•
W972	•	•	•	•	•	•	•	•	•
W973	•	•	•	•	•	•	•	•	•
W979	•	•	•	•	•	•	•	•	•
W995	•	•	•	•	•	•	•	•	•
W996	•	•	•	•	•	•	•	•	•
W997	•	•	•	•	•	•	•	•	•
WS137	•	•	•	•	•	•	•	•	•
WS149	•	•	•	•	•	•	•	•	•
WW141	•	•	•	•	•	•	•	•	•
WW161	•	•	•	•	•	•	•	•	•
WW935	•	•	•	•	•	•	•	•	•
WW944	•	•	•	•	•	•	•	•	•
<b>GENERALPUMP</b>									
T521	•	•	•	•	•	•	•	•	•
T531	•	•	•	•	•	•	•	•	•
T701	•	•	•	•	•	•	•	•	•
T711	•	•	•	•	•	•	•	•	•
T721	•	•	•	•	•	•	•	•	•
T731	•	•	•	•	•	•	•	•	•
T911	•	•	•	•	•	•	•	•	•
T981	•	•	•	•	•	•	•	•	•
T991	•	•	•	•	•	•	•	•	•
T9321	•	•	•	•	•	•	•	•	•
T9731	•	•	•	•	•	•	•	•	•
T9791	•	•	•	•	•	•	•	•	•
T9951	•	•	•	•	•	•	•	•	•
T9961	•	•	•	•	•	•	•	•	•
T9971	•	•	•	•	•	•	•	•	•
TS1371	•	•	•	•	•	•	•	•	•
TS1491	•	•	•	•	•	•	•	•	•
TT1411	•	•	•	•	•	•	•	•	•
TT1611	•	•	•	•	•	•	•	•	•
TT9351	•	•	•	•	•	•	•	•	•
TT9441	•	•	•	•	•	•	•	•	•

KIT 1  
0225507020



ilość / quantity 2x6

KIT 4  
0225599094 Ø 20



ilość / quantity 2x6

KIT 88  
0725507000 Ø 15



ilość / quantity 3x3

KIT 19  
0225507019 Ø 20



ilość / quantity 2x3

KIT 92  
0225507041 Ø 15



ilość / quantity 7x1

KIT 27  
0225507221 Ø 20



ilość / quantity 6x1

KIT 23  
0225599027 Ø 20



ilość / quantity 1x3

0225509005  
Ø 15x37,5



ilość / quantity 1

0225509001  
Ø 20x40



ilość / quantity 1

**KIT 1**  
0225507020



ilość / quantity 2x6

**KIT 123**  
0225507021



ilość / quantity 2x6

**KIT 97**     Ø 15  
0225507205



ilość / quantity 4x3

**KIT 141**     Ø 18  
0226307219



ilość / quantity 4x3

**KIT 96**     Ø 15  
0225507040



ilość / quantity 5x1

**KIT 140**     Ø 18  
0225507039



ilość / quantity 5x1

**KIT 83**     Ø 15  
1271804021



ilość / quantity 1x3

**0225509004**  
Ø 15x25



ilość / quantity 1

**0225509012**  
Ø 18x25



ilość / quantity 1

**INTERPUMP - SERIES 51**

Typ pompy Type	Zawory / Valves		Komplet uszczelnień Seal kits		Uszczelnienia olejowe Oil seals		Nurnik / Piston	
	KIT 1	KIT 123	KIT 97	KIT 141	KIT 96	KIT 140	KIT 83	0225509004 0225509012
<b>INTERPUMP</b>								
W1208		●		●		●		●
W1210		●		●		●		●
W1507		●		●		●		●
WW55	●		●		●		●	
WW56	●		●		●		●	
WW74	●		●		●		●	
WW75	●		●		●		●	
WW90	●		●		●		●	
WW93	●		●		●		●	
WW94	●		●		●		●	
WW95	●		●		●		●	
WW906		●		●		●		●
WW907		●		●		●		●
WW909		●		●		●		●
WW1508		●		●		●		●
WW1509		●		●		●		●
WW1510		●		●		●		●
WW1511		●		●		●		●
WW1513		●		●		●		●
<b>GENERALPUMP</b>								
T1209		●		●		●		●
T1212		●		●		●		●
T1508		●		●		●		●
TT551	●		●		●		●	
TT561	●		●		●		●	
TT741	●		●		●		●	
TT751	●		●		●		●	
TT901	●		●		●		●	
TT931	●		●		●		●	
TT941	●		●		●		●	
TT951	●		●		●		●	
TT1508		●		●		●		●
TT1510		●		●		●		●
TT1511		●		●		●		●
TT1512		●		●		●		●
TT1513		●		●		●		●
TT9061		●		●		●		●
TT9071		●		●		●		●
TT9091		●		●		●		●

### INTERPUMP - SERIES 61, 62

Typ pompy Type	Zawory / Valves		Komplet uszczelnień Seal kits		Uszczelnienia olejowe Oil seals	Nurnik / Piston 0225509007
	KIT 122	KIT 77	KIT 7	KIT 78	KIT 44	
<b>INTERPUMP</b>						
W355	●	●	●	●	●	●
W425	●	●	●	●	●	●
<b>GENERALPUMP</b>						
T3551	●	●	●	●	●	●
T4251	●	●	●	●	●	●

KIT 122  
0225599222



ilość / quantity 2x6

KIT 62  
0225507054



ilość / quantity 2x6

KIT 77  
0226399202 Ø 20



ilość / quantity 3x3

KIT 69  
0225507222 Ø 20



ilość / quantity 3x3

### INTERPUMP - SERIES 69

Typ pompy Type	Zawory / Valves		Komplet uszczelnień Seal kits		Uszczelnienia olejowe Oil seals	Nurnik / Piston 0225509000
	KIT 62	KIT 69	KIT 7	KIT 82	KIT 37	
<b>INTERPUMP</b>						
WS104	●	●	●	●	●	●
WS153	●	●	●	●	●	●
<b>GENERALPUMP</b>						
TS1041	●	●	●	●	●	●
TS1531	●	●	●	●	●	●

KIT 7  
0225599007 Ø 20



ilość / quantity 1x6

KIT 78  
0225599223 Ø 20



ilość / quantity 7x1

KIT 82  
0225599224 Ø 20



ilość / quantity 7x1

0225509007  
Ø 20x115



ilość / quantity 1

0225509000  
Ø 20x50



ilość / quantity 1

KIT 44  
0225599225 Ø 35



ilość / quantity 1x3

KIT 37  
0225599226 Ø 35



ilość / quantity 1x3

**KIT 123**  
0225507021



ilość / quantity 2x6

**KIT 160**  
0225507219 Ø 15



ilość / quantity 4x3

**KIT 161**  
0226307220 Ø 18



ilość / quantity 4x3

**KIT 167**  
0225507017 Ø 18



ilość / quantity 7x1

**0225509005**  
Ø 15x37,5



ilość / quantity 1

**KIT 166**  
0225507044 Ø 15



ilość / quantity 7x1

**KIT 159**  
0225099003 Ø 18



ilość / quantity 1x3

**0225509002**  
Ø 18x37,5



ilość / quantity 1

**INTERPUMP - SERIES 63**

Typ pompy Type	Zawory / Valves	Komplet uszczelnień Seal kits			Uszczelnienia olejowe Oil seals	Nurnik / Piston		
	KIT 123	KIT 160	KIT 161	KIT 166	KIT 167	KIT 159	0225509005	0225509002
EH1413	●	●		●		●	●	
EH1416	●	●		●		●	●	
EH2009	●	●		●		●	●	
EH2011	●	●		●		●	●	
EL1411	●		●		●	●		●
EL1413	●		●		●	●		●
EL1714	●		●		●	●		●
EL2007	●	●		●		●	●	
EL2009	●	●		●		●	●	
UH2008	●	●		●		●	●	
UH2011	●	●		●		●	●	
UH2013	●	●		●		●	●	
UH2016	●	●		●		●	●	
UL1413	●		●		●	●		●
UL1415	●		●		●	●		●
UL2009	●	●		●		●	●	
UL2011	●	●		●		●	●	



**INTERPUMP - SERIES 76, 77**

Typ pompy Type	Zawory / Valves		Komplet uszczelnień Seal kits			Uszczelnienia olejowe Oil seals		Nurmik / Piston	
	KIT 43	KIT 113	KIT 79	KIT 115	KIT 80	KIT 44	0225509008	0225509009	
<b>INTERPUMP</b>									
W6	●		●		●	●		●	
W8	●		●		●	●		●	
W12	●		●		●	●		●	
W15	●		●		●	●		●	
W155	●	●		●		●	●		
W159	●	●		●		●	●		
<b>GENERALPUMP</b>									
T61	●		●		●	●		●	
T81	●		●		●	●		●	
T121	●		●		●	●		●	
T151	●		●		●	●		●	
T1551	●	●		●		●	●		
T1591	●	●		●		●	●		

**KIT 43**  
 0225507023


ilość / quantity 2x6

**KIT 113**  
 0225507229      Ø 30


ilość / quantity 3x3

**KIT 79**  
 0225507025      Ø 45


ilość / quantity 3x3

**KIT 115**  
 0225507026      Ø 30


ilość / quantity 7x1

**KIT 80**  
 0225507030      Ø 45


ilość / quantity 7x1

**KIT 44**  
 0225599225      Ø 35


ilość / quantity 1x3

**0225509008**  
 Ø 30x70


ilość / quantity 1

**0225509009**  
 Ø 45x70


ilość / quantity 1

**KIT 1**  
0225507020



ilość / quantity 2x6

**KIT 87**  
0225507031

Ø 15



ilość / quantity 4x3

**KIT 97**  
0225507205

Ø 15



ilość / quantity 4x3

**KIT 85**  
0225507032

Ø 15



ilość / quantity 5x1

**KIT 96**  
0225507040

Ø 15



ilość / quantity 5x1

**KIT 83**  
0225599074

Ø 15



ilość / quantity 1x3

0225509004

Ø 15x25



ilość / quantity 1

**INTERPUMP**

Typ pompy Type	Zawory / Valves		Komplet uszczelnień Seal kits			Uszczelnienia olejowe Oil seals		Nurmik / Piston
	KIT 1	KIT 87	KIT 97	KIT 85	KIT 96	KIT 83	0225509004	
<b>BOXJET</b>								
8.70	●	●		●		●	●	●
8.90	●	●		●		●	●	●
11.50	●	●		●		●	●	●
TURBO 15	●	●		●		●	●	●
TURBO 19	●	●		●		●	●	●
TURBO 21	●	●		●		●	●	●
<b>BIG BANG FORMULA 99 GONG FLASH</b>								
F.122	●	●		●		●	●	●
F.124	●	●		●		●	●	●
X.117S	●	●		●		●	●	●
X.161	●	●		●		●	●	●
X.220S	●	●		●		●	●	●
X.230	●	●		●		●	●	●
X.240S	●	●		●		●	●	●
<b>TURBO</b>								
15	●		●		●	●	●	●
19	●		●		●	●	●	●
21	●		●		●	●	●	●
8.70	●		●		●	●	●	●
8.90	●		●		●	●	●	●
10.100	●		●		●	●	●	●
11.50	●		●		●	●	●	●
11.70	●		●		●	●	●	●
11.120	●		●		●	●	●	●
13.90	●		●		●	●	●	●

**INTERPUMP - SERIES HT**

Typ pompy Type	Zawory / Valves		Komplet uszczelnień Seal kits			Uszczelnienia olejowe Oil seals		Nurnik / Piston	
	KIT 201	KIT 123	KIT 202	KIT 203	KIT 204	KIT 205	KIT 2	KIT 159	0225509003 63.0405.09
HT4715	●		●	●			●		
HTS6311		●			●	●		●	●

**KIT 201**  
**0225507228**


ilość / quantity 3x6

**KIT 123**  
**0225507021**


ilość / quantity 2x6

**KIT 202**  
**0225507224**     Ø 22


ilość / quantity 2x3

**KIT 203**  
**0225507227**     Ø 22


ilość / quantity 5x1

**KIT 204**  
**0225599221**     Ø 18


ilość / quantity 2x3

**KIT 205**  
**0225599220**     Ø 18


ilość / quantity 1x1

**KIT 2**  
**0225599001**     Ø 22


ilość / quantity 1x3

**KIT 159**  
**0225099003**     Ø 18


ilość / quantity 1x3

**0225509003**  
 Ø 22x50


ilość / quantity 1

**0225509010**  
 Ø 18x38,5


ilość / quantity 1

KR 11  
0200107057



ilość / quantity 3x6

KR 12  
0200107058



ilość / quantity 3x6

KR 13  
0200107059



ilość / quantity 3x6

KR 7  
0700107022

Ø 12



ilość / quantity 3x3

KR 2  
0242607200

Ø 14



ilość / quantity 4x3

KR 8  
0200107062

Ø 14



ilość / quantity 6x3

KR 5  
0200107061

Ø 15



ilość / quantity 6x3

KR 1  
0242607201

Ø 18



ilość / quantity 6x3

KR 4  
0242607202

Ø 20



ilość / quantity 6x3

KR 10  
0200107064

Ø 20



ilość / quantity 6x3



KIT L20  
0200107108



ilość / quantity 4x3

KIT L18  
0200107109

Ø 14



ilość / quantity 1x3

KIT L124  
0200107110

Ø 12



ilość / quantity 1x3

KIT L132  
0200107118

Ø 12



ilość / quantity 1x3

KIT L19  
0200107119

Ø 14



ilość / quantity 1x3

KIT L79  
0200107120

Ø 12



ilość / quantity 1x3

**CZĘŚCI PASUJĄCE DO LAVOR / FASA**

Typ pompy Type	Zawory / Valves		Komplet uszczelnień Seal kits		Uszczelnienia olejowe Oil seals	
	KIT L20	KIT L18	KIT L124	KIT L132	KIT L19	KIT L79
<b>LAVOR</b>						
BEST 24			●			●
BEST 28	●			●		●
BI-CLEANER			●			●
COBRA 19			●			●
COBRA 20			●			●
COBRA 130			●			●
DERBY			●			●
DOLPHIN	●	●			●	
DOUBLE-PR			●			●
DX	●		●			●
DX'03			●			●
EAGLE 20	●	●			●	
EAGLE 24	●		●			●
EAGLE 28	●			●		●
ED			●			●
EKO			●			●
EQ	●	●			●	
FALCON	●	●			●	
FALCON 12	●		●			●
FKX 1018	●	●			●	
FKX 1123	●		●			●
GT	●	●			●	
HAPPY			●			●
HIPPOJET (HJ)	●	●			●	
HW	●		●			●
HW 28	●			●		●
JD			●			●
JET			●			●
JET POWER (JP)	●	●			●	
JOKER (JK)	●	●			●	
KD			●			●
KOALA	●	●			●	
KS	●	●			●	
KS 12	●		●			●
LD	●		●			●
LD 18	●			●		●
LP	●	●			●	
LW 1400 S			●			●
MACH	●			●		●
MACH 20'03			●			●
MACH 28	●			●		●
MF			●			●
MISSOURI	●			●		●
MODULO (MD)	●	●			●	
NOVAK	●	●			●	
PARANA	●			●		●
PARTNER	●	●			●	
PJ POWER JET 24	●		●			●
PJ POWER JET 28	●			●		●

**CZĘŚCI PASUJĄCE DO LAVOR / FASA**

Typ pompy Type	Zawory / Valves		Komplet uszczelnień Seal kits		Uszczelnienia olejowe Oil seals	
	KIT L20	KIT L18	KIT L124	KIT L132	KIT L19	KIT L79
POWER 13			●			●
POWER 15			●			●
POWER 17			●			●
RIO 1123	●		●			●
SD			●			●
SKANER	●	●			●	
SONIC			●			●
SPARK	●	●			●	
SUN			●			●
TANKER	●	●			●	
TD			●			●
TECNICA 130	●	●			●	
TF			●			●
THERMIC 3/S	●	●			●	
TIGER	●		●			●
TIGER '03			●			●
TURTLE	●		●			●
VIPER '03			●			●
VIPER 12	●		●			●
VIPER 14	●	●			●	
WASHER 15			●			●
WASHER 17			●			●
WASHER 19			●			●
WP	●	●			●	
WP '03			●			●
WP 12	●		●			●
YUKON	●			●		●
<b>FASA</b>						
FA-SA AVANT	●		●			●
FA-SA CHRONO	●		●			●
FA-SA CHRONO '03			●			●
FA-SA COUNTRY	●		●			●
FA-SA DANCE			●			●
FA-SA EXXEL20	●		●			●
FA-SA EXXEL20 '03			●			●
FA-SA FUNKY	●	●			●	
FA-SA HIPPO	●	●			●	
FA-SA JAZZ			●			●
FA-SA KAIMAN	●			●		●
FA-SA KAPPA A	●		●			●
FA-SA KAPPA A '03			●			●
FA-SA KAPPA 100	●	●			●	
FA-SA KLIMAT 120	●		●			●
FA-SA KLIMAT 150	●		●		●	
FA-SA LEADER			●			●
FA-SA ROCK 28	●			●		●
FA-SA SAMBA 19			●			●
FA-SA SOUL			●			●
FA-SA SWING	●		●			●

SP 1  
0200107070



ilość / quantity 2x6

SP 2  
0200107071



ilość / quantity 5x6

SP 3  
0200107072



ilość / quantity 3x6

SP 4  
0200107073



ilość / quantity 2x6

SP 10  
0200107075

Ø 16



ilość / quantity 5x3

SP 5  
0200107076

Ø 18



ilość / quantity 6x3

SP 11  
0200107081

Ø 18



ilość / quantity 4x3

SP 6  
0200107077

Ø 18



ilość / quantity 6x3

SP 7  
0200107078

Ø 18



ilość / quantity 5x3

SP 8  
0200107079

Ø 18



ilość / quantity 6x3



**CZĘŚCI PASUJĄCE DO SPECK**

Typ pompy Type	Zawory / Valves				Komplet uszczelnień Seal kits					Nurnik / Piston						
	SP 1	SP 2	SP 3	SP 4	SP 10	SP 5	SP 11	SP 6	SP 7	SP 8	SP 9	SP 12	SP 13	SP 14	SP 15	SP 16
P10/13-100		●				●	●					●				
P10/15-130		●				●	●					●				
P11/10-100		●				●	●					●				
P11/13-100		●				●	●					●				
P11/15-150		●				●	●					●				
P11/10-100D												●				
P11/13-100D												●				
P11/15-150D												●				
P21/5-450			●									●				
P21/7-400			●									●				
P21/15-160		●					●					●				
P21/16-200	●				●									●		
P21/18-130		●											●			
P21/23-130		●											●			
P21/18-130D													●			
P21/23-130D													●			
P22/15-280														●		
NP10/10-140			●					●							●	
NP10/13-140			●					●							●	
NP10/15-140			●					●							●	
NP16/14-210			●						●						●	
NP16/15-210			●						●						●	
NP16/18-140			●						●						●	
NP16/21-140			●												●	
NP25/21-280				●							●					●
NP25/21-350				●							●					●
NP25/25-220				●							●					●

**SP 9**  
0200107080      Ø 18



ilość / quantity 6x3

**SP 12**  
0200109101      Ø 18x39



ilość / quantity 1

**SP 13**  
0200109102      Ø 20x39



ilość / quantity 1

**SP 14**  
0200109103      Ø 16x39



ilość / quantity 1

**SP 15**  
0200109104      Ø 18x32,5



ilość / quantity 1

**SP 16**  
0200109105      Ø 18x45



ilość / quantity 1

L 2  
0200107121



ilość / quantity 2x6

L 2/A  
0200107122



ilość / quantity 4x3

L 34  
0200107123



ilość / quantity 2x6

L 74  
0200107124



ilość / quantity 4x3

L 108  
0200107074



ilość / quantity 2x6

L 3  
0200107125 Ø 15



ilość / quantity 1x6

L 33  
0200107126 Ø 15



ilość / quantity 2x3

L 66  
0200107127 Ø 14



ilość / quantity 1x3

L 109  
0200107082 Ø 15



ilość / quantity 4x3

L 5  
0200107083 Ø 15



ilość / quantity 1x3

L 19  
0200107119 Ø 14



ilość / quantity 1x3

CZĘŚCI PASUJĄCE DO LAVOR / FASA

Typ pompy Type	Zawory / Valves					Komplet uszczelnień Seal kits			Uszczelnienia olejowe Oil seals		
	KIT L2	KIT L2/A	KIT L34	KIT L74	KIT L108	KIT L3	KIT L33	KIT L66	KIT L109	KIT L5	KIT L19
<b>LAVOR</b>											
BEST	●					●				●	
JET FIRE 1000	●					●				●	
JOLLY 4					●				●	●	
JOLLY 5					●				●	●	
KARJET (KJ) BEST	●					●				●	
KARJET (KJ) OMNIA		●				●				●	
KW (SPACE)		●				●				●	
LASER (LS)		●				●				●	
LAVORJET	●					●				●	
LKX					●				●	●	
LMX					●				●	●	
LW	●					●				●	
LWX 1400			●				●			●	
LWX 1500			●				●			●	
NPX 4					●				●	●	
NPX 1400					●				●	●	
NPX 1500					●				●	●	
OMNIA		●				●				●	
THERMIC 5					●				●	●	
THERMIC 5/S				●				●			●
VULKER			●				●			●	
<b>FASA</b>											
FA-SA ARTIC						●			●	●	
FA-SA KURSAL	●						●			●	
FA-SA SUNDEK						●			●	●	
FA-SA TANGO		●					●			●	